

# Brush Strokes



*Penn's Woods Painters Newsletter*

*www.pennswoods painters.com*

*South Central Pennsylvania Chapter of the Society of Decorative Painters*

Vol. 22 No. 4

July/August 2011

**Next General Membership Meeting: Monday July 18, 2011**  
**Place: First Church of God Community Center**  
**201 E. Green St., Mechanicsburg, PA**  
**Social: 6:00 p.m. (Note Time Change) Business Meeting: 7 p.m.**

## Red/White/Blue July Program: Indoor Picnic & Painting "Minis" with Darlene Ferrier

Bring your appetite, acrylic painting supplies, and your money to participate in our "Red/White/Blue July" program. At 6 p.m. we will be "grilling" hot dogs, eating picnic fare, and eyeing up all the special goodies in the red basket that will be raffled off to offset the cost of the purchase of the "Paint for Freedom" cards. After the business meeting and raffle, another one of our talented members, Darlene Ferrier, will teach us how to paint a "mini."

Darlene says, "a recent trend, in both the decorative painting and fine art worlds, is to paint small inexpensive items that can be used for gifts, inventory for art-fares, ornaments, or display in homes. I call these 'minis' and have been doing them for quite a few years. I use the small pieces to fill in my show inventory so that I have a variety of sizes and prices for everyone. Also, as a collector of artwork, I am running out of wall and display space, so these mini artworks are a self-serving idea.

In addition to painting the geranium 'mini,' I will be providing a few tips on how to turn any pattern or photo into a mini."

If you want to paint along with Darlene, bring your normal acrylic painting supplies plus those listed



below. We will have a limited number of canvases and small paper mache boxes for sale if you don't have a surface. You will have time to basecoat before the painting begins.

Surface: 4"x6" canvas, canvas board, or wood basecoated in Light Buttermilk (or similar)

Brushes: #1 liner, #4 round, 1/2 "shader or angle, small dry brush, and old toothbrush

Paints: DecoArt Americana Alizarin Crimson, Autumn Red, Black Green, Burnt Sienna, Houser Lt. Green, Lt. Buttermilk, Plantation Pine, Slate Gray, Soft Black, Soft Peach, True Red, Yellow Ochre. If you don't have the exact colors listed, **do not go out and buy them!** Just bring a light, medium and dark value of both red and green. We will be using such a small amount of paint that we can easily share.

If you signed up for a "Paint for Freedom" card, pick up your card from Mary Ann Wilson to take home and basecoat before the September 24 meeting.

Don't forget to bring back the surface you picked out from the Surface Exchange on March 21. We will have a "Show and Tell" of the exchanged surfaces.

*Carol L. Henry, VP. Programs*

**LOOKING AHEAD!!**  
**PWP'S September General Membership Meeting**  
**SATURDAY, SEPTEMBER 24, 2011**  
**Program: "Paint for Freedom" Cards**  
**Social: 9 a.m. Business Meeting: 9:30 a.m.**

## *Ways and Means Updates for July 2011*

Linda Kapp has created some wonderful new button pins for us. The pins will be available at the July meeting. They are priced at \$3.00 each, 2 for \$5.00 or all 12 for \$20.00 – plus tax! We'll also plan to have them available at the September meeting. If you are interested in purchasing a button pin, between meetings, please contact me at 717 730 9220 or [hilaryfelinski@comcast.net](mailto:hilaryfelinski@comcast.net), and we can arrange a time to get together for your purchase!

We'll have some surfaces available for purchase, too, at the July meeting, that fit our theme of a mini-painting. Since we're still dealing with 'flooding fall out' issues, please email or call me, before July 13, if there is something, in particular that you would like to purchase at the July meeting. This way, I have time to check the inventory list, and let you know if we have what you are interested in, price, etc. And, as you know, checks are preferred over cash, especially for larger purchases.

Now, you may be thinking.....I haven't seen or heard anything about fundraising for 2012! Boy, it's been a nice break, hasn't it?

Well, we had a rather spirited discussion, at our May meeting, about what time of year is good/better/best for a fundraising luncheon, especially for those years in which we are also planning to have a Retreat. At our June board meeting, we decided that our best approach for the fundraising luncheon is to hold it every other year, and not in the same year as the retreat. So, our next fundraiser luncheon will be planned for **2013**, not for 2012. If you are interested in being part of the luncheon committee for **2013**, please let me and Karen Wolford ([wolford.karen@yahoo.com](mailto:wolford.karen@yahoo.com)) know. We'll put your name on the list so, as things get moving, you'll be included. A short lived Whew!

Pushing the luncheon out to 2013 means that we need to figure out what our fundraiser for 2012 will be – and **plan for 2012 now**, in 2011. This way, we shouldn't be caught short when 2012 arrives. Please send me your ideas for 2012 fundraising – what fundraising ideas have been successful, or fun, or ones to avoid? Let me know, too, if you are able to help us in 2012, as part of the fundraising committee. I'll schedule a meeting, probably in August, so we can get started on the plans for 2012.

Last – at our July meeting, we will have a special 'Red, White and Blue' themed raffle 'basket'. Our hope is that the proceeds from our Raffle cover the cost of our rent for the meeting. Remember, our raffle tickets are \$1.00 each or 6 for \$5.00! I can tell you that this 'basket' will include a gift card, and a gift certificate along with a whole host of red, white and/or blue items....everything from chamois to snack dishes (we do love to eat, don't we?). The 'basket' will be on display as you enter the meeting. I'll do my best to remember to put a list of the contents together, and have it visible.

I'll close with a thank you, again, for your continued support of our chapter. You are the folks who make this chapter successful.

*Hilary Felinski  
Ways & Means Chair*

## *Help Wanted...*

**The PWP Annual Tea & Art Show Committee is still in need of a few more volunteers for the October 23, 2011 show. If you can lend a hand on that day or with any preparations for that day, the sign up sheet will be at the July PWP meeting. If you can't make the meeting, you can e-mail [darleneferrier@aol.com](mailto:darleneferrier@aol.com).**



**The 2011 Tea and Art Show Committee**

## Presidents Message ...

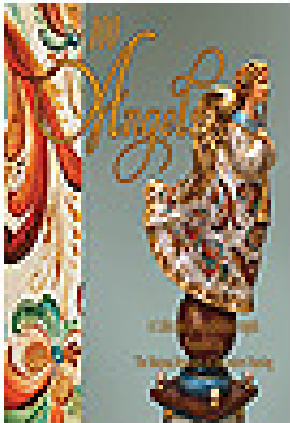
Fellow Penn's Wood's Painter's,

We have had a great first half of 2011, so much more to do and already planning for 2012. Hope all of you give your full consideration to attending the retreat; it was such a wonderful time and really gives you relief from the Winter Blues! Not to mention, I'm ready with my wildest pj's ever!



Enjoy all the activities that we have planned for the rest of the year!

Paint Happy,  
Sue



The National Museum of Decorative Painting (formerly Decorative Arts Collection) is now offering its newest publication, *100 Angels*. One hundred fabulous angel figures painted by today's foremost decorative artists are showcased in this inspirational 240-page, hardcover book. Every angel, complete with detail insets, is lavishly presented in full color. Complete painting instructions for all 100 angels are featured on two instructional CDs of over 700 pages of written directions, patterns, and step-by-step color illustrations.

To order your copy (\$49.95), visit:  
[www.dpmuseum.org/100angels.html](http://www.dpmuseum.org/100angels.html)

### HEIRLOOMS FROM THE HEART

#### 2011 Seminars

Heather Reddick  
Sept 20—22

Heidi England  
October 7—9

Ronnie Bringle  
October 14—16

Brenda Stewart  
October 21—23



We carry a large variety of top quality wood surfaces. Check our website for updates and new products including our new metal art.



2677 N. Old Trail, Shamokin Dam, PA 17876 • 570.743.4141  
[heirloomstudio@pa.net](mailto:heirloomstudio@pa.net) • [www.heirloomsfromtheheartstudio.com](http://www.heirloomsfromtheheartstudio.com)  
Orders: 866-772-2667



## MEMBERSHIP REPORT

As of June 30, 2011 we currently have 95 members plus 2 lifetime members; this is an increase of 2 members compared to last year at this time. In May we received a new membership application from Susan DePalma. Be sure to welcome Susan at the next meeting or seminar. Please add Susan's information for your directory, if you haven't received a directory please see me at the upcoming meeting. Also, update the email address for Diane Duncan.

*Susan DePalma*  
3271 Hawk Drive  
N Huntingdon, PA 15642-6321  
724-861-8047

Diane Duncan e-mail: [dcduncan67@comcast.net](mailto:dcduncan67@comcast.net)



*Linda Kapp, VP Membership*

## TREASURE BOXES

Want to make a child smile? Please continue to paint Treasure Boxes for the children at the Shriners and other local hospitals. The object of PWP's program is to create hand painted "treasure boxes" for youth less than 18 years old who are receiving care at the Shriners Hospital for Children in Philadelphia. These young patients are often given small gifts to divert their attention from their pain.

We recently delivered 22 boxes to the Zembo Shrine who delivered them to the Philadelphia Children's Hospital.

Treasure Boxes are containers the youngsters can use to store their toys in and take them home.

All members are invited to join in the fun and help this worthy cause. The process is simple. Treasure boxes should be able to fit into the drawer of a hospital bedside table. Shoe boxes, craft or photo storage boxes (available at craft stores) are the correct size. The boxes should be painted with a design appropriate for a boy or girl under 18 years of age. If you plan to use a copyrighted design, please obtain permission from the artist. Boxes may also be decoupaged, jeweled, or simply decorated with stickers. The photo boxes at A.C. Moore and Michaels are just the right size to sit on the table beside the beds. Look for special sales on the photo boxes at these stores.

*Barb Lehman, Treasure Box Chair*

## MEMORY BOXES

Summer has arrived, but the need for Memory Boxes doesn't take a vacation. We recently delivered nine boxes to the Holy Spirit Hospital. When it is too hot to be outside, stay inside in the cool air conditioning and paint a Memory Box.



Thanks to everyone for all the boxes you have painted. The nurses from our hospitals are so appreciative of the boxes we give them for the grieving families. Please keep up the good work.

*Dottie Shultz*  
*Memory Box Chair*

**Dear SDP Member: Check out these wonderful ways to shop, search and support SDP!**



We are so excited to announce that SDP has signed up with three websites that help us raise funds—painlessly. Next time you shop or search online, go to these websites first!

[Goodsearch.com](http://Goodsearch.com) is a search engine with a mission to help organizations such as SDP. It's powered by Yahoo!, so you get great search results, and each time you search, GoodSearch makes a donation to SDP!

[GoodShop.com](http://GoodShop.com) is an online marketplace that donates a percentage of your purchase to SDP. You can choose from hundreds of popular merchants. When you shop through GoodShop, the experience is exactly the same as going to the retailer's websites directly.

[ShopforMuseums.com](http://ShopforMuseums.com) seeks to be the primary source of online fundraising for museums and related organizations. They do this by making it easy for people to generate donations for their organizations of choice whenever they shop online.

When you use these websites, you raise money for SDP at no additional cost to you! For more information, just go to these websites and follow the instructions.

Thank you for your support and for being a member of our SDP family!

**MINUTES OF THE GENERAL MEMBERSHIP MEETING  
PENNS WOODS PAINTERS CHAPTER  
May 14, 2011**



**Sue Wenning**, President, called our meeting to order at 9:30 a.m. after a few words from Sheila Rouse.

**Treasurer's Report – Lois Eckert** reported as of 4/18/2011, our beginning balance was \$8,819.36. Income between April 18 and May 14 is \$143.40, and expenses totaled \$406.03. Ending balance as of 5/14/11 is \$8,556.73. Filed for audit.

**President's Report** – Reviewed water damage situation and explained that we lost items from the library (mostly hard covered books) as well as scrapbooks and the brush washer. Items are to be removed by committee for storage offsite.

Budget was not included in newsletter. Sue Wenning will send an email to the general membership and requests responses for official approval of the budget.

SDP Convention – Sue is attending and will bring material back from the Chapter's Gathering. Jane Allen and Darlene Ferrier are also attending.

**Vice President – Programs-Carol Henry:** Merry May – today's program. Deb Cornman is teaching calligraphy. Kits are \$5.00 or each piece is \$1.00. Monday, July 18, Darlene Ferrier will demonstrate a mini-painting. We will have an indoor picnic, which will start at 6:00 (30 minutes earlier than normal). July 9 Field Trip is \$7.00 for members. Need 25 for discounted rate. We will meet at Giant on Route 15, Dillsburg, at 8:00. Tour is expected to start at the visitor's center in Frederick, MD.

**Vice President – Membership – Linda Kapp** 93 members reported earlier. Linda has received 2 more renewals and 1 new member for a total of 96 paid members and 2 lifetime members. Directory is available on paper; request a copy from Linda Kapp.

## **Committee Reports**

**Decorative Arts Tea – Darlene Ferrier/Jane Allen/Doris Kohler:** Sunday, October 23 at the Camp Hill United Methodist Church. Signup sheet circulated for volunteers. Extra categories added to allow more winners and participants.

**Historian – Shelia Rouse:** No Report

**Hospitality – Pat Sheely:** Thank you to those who brought food for today's meeting. Next meeting, 7/18, start at 6:00pm. Menu is Hot Dogs, Chips, Macaroni Salad, Fruit. If you want to bring anything else, let Pat know,

**Librarian – Hattie Ogle:** A number of books and CDs were lost in the flooding. Hattie will prepare an updated list and have it available at the July meeting. Jane Wheeler donated Priscilla Hauser's Workbook3.

**Memory Boxes – Dottie Shultz:** Delivered 30 boxes to Harrisburg and 3 to Carlisle. Boxes are available. Inventory is in good shape due to Memory Box program in February 2011.

**Newsletter – Sheila Rouse:** No report.

**Paint Ins – Dee DeLorenzo:** Jane Allens's Triptych is Postponed. Jane has the surface at the meeting, for a cost of \$12.50. Class cost is \$20.00. Jane has also provided the prep instructions and pattern. Email or call Jane if you have questions.

**Publicity – Linda Deardorff:** 5/14 meeting listed in the Carlisle Sentinel.

**Seminars – Jackie Nowak:** Arlene Linton, 6/17-19/11. Places are still available. Jackie has the sample for Saturday's piece, which is \$22.00 plus shipping. For Ginger Edward's September seminar, Jackie is trying to get the dimensions for the Rose workshop (shown as a stool) and she is tracking down the tin tray. Dottie will collect forms and money at today's meeting.

**Treasure Boxes – Barb Lehman:** Thanks to all who have provided boxes. Barb delivered 22 to the Zembo Shrine last week.

**Ways & Means – Hilary Felinski:** Recap \$3200 towards budget from luncheon. Store is closed except for gray palettes and 2 pitchers. Tax is due on all items in store other than clothing. New inventory is here, but could not be made available today.

**Retreat – Dee DeLorenzo:** February 3-5, 2012 at the Phillip Bongiorno Conference Center in Carlisle PA. Theme is Fun and Functional. Next committee meeting will be moved from 6/14 due to Jubilee Day in Mechanicsburg. Rates will be close to last year's: \$195/single, \$180/Double, \$165/3 or more per room. Payment plan, starting at September meeting, must be completed by January 2012 meeting. We gather Friday afternoon and leave Sunday afternoon. PWP supplies Friday meal. Cost covers 3 meals on Saturday and 2 meals on Sunday. It is anticipated that the cost will also cover surfaces and paints.

**New Business: Sheila Rouse** thanked all the members in attendance for their prayers, the meals, and their help. Sheila explained that her numbers started out as pretty high, before chemo and, at the last check, are down significantly. Sheila and her team have a specific goal in mind by July.

**Sutliff Volkswagen – 5/21 – Face Painting chance.** Sutliff will donate towards the chapter if we help. See Carol Henry on Sheila's behalf.

**Hospitality – Pat Sheely** reminded us that a new Hospitality chair is needed for 2012. Fran Huffman volunteered.

**Location-** Sue suggested that we should look at an alternate location for meetings.

**Seminar committee -** Sue also suggested that the Seminar Committee could use some help, with the time and effort required for surfaces (preparation, obtaining, storage).

**2012 Fundraiser –** Karen Wolford has offered to co-chair for 2012. Looking for additional co-chair(s). Committee had suggested September instead of April. Discussion proved Fall is not viewed as a practical option by members. Late March or late April to be considered by 2012 committee. Need to consider Retreat, plus Fundraiser and overlapping efforts.

**Symphony Showhouse –** PWP can expect to be invited to participate in 2012 Symphony Showhouse. Work usually starts in March and Showhouse usually runs from mid-May through early June.

**Old Business: Nominating Committee –** to be announced at next meeting

### **Miscellaneous Announcements:**

Mary Owens workshop, 7/8-10/11 – some folks are attending; if you are willing to share a room, call Penny Henry. There being no further business, the meeting was adjourned at 10:30 PM.

Respectfully Submitted:  
Hilary Felinski on behalf of Mary Ann Couch, Secretary



**PENN'S WOODS PAINTERS  
TREASURER'S REPORT  
June 20, 2011**

<b><u>BEGINNING BALANCE</u></b>	\$ 8,556.73
<b><u>INCOME</u></b>	
Seminars-Income	\$ 3,160.00
Ways & Means-Income	\$ <u>169.90</u>
<b>TOTAL INCOME</b>	\$ 3,329.90
<b><u>EXPENSES</u></b>	
Administration-Expenses	\$ 825.40
Operations- Expenses	\$ 161.14
Programs-Expenses	\$ 300.00
Seminars-Expenses	\$ 2,211.80
Ways & Means-Expenses	\$ <u>69.98</u>
<b>TOTAL EXPENSES</b>	\$ 3,568.32
<b>ENDING BALANCE</b>	\$ 8,318.31

*Lois Eckert* , Treasurer

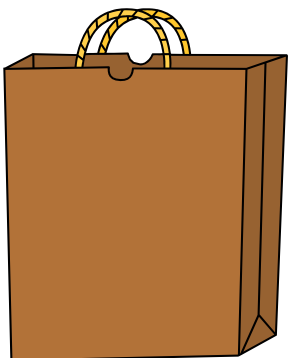
*Note: The bank balance may appear excessive. However, please keep in mind that we must hold funds in reserve for upcoming events.*

**Library Notes**

A new listing of books, DVDs, etc. will be placed in the Library at our July meeting. The items we lost in the flood have been removed from the list. We have quite a few new books. Please check them out.

**Hattie Ogle  
717-258-3438**

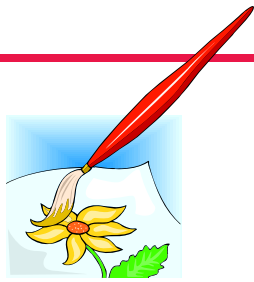
[ogle@pa.net](mailto:ogle@pa.net)



**SURFACE EXCHANGE REMINDER**

Don't forget to paint and bring back the surface you picked at the Surface Exchange to the July 18 meeting. The following members participated in the Surface Exchange: Mary Ann Couch, Melissa Crowther, Dee DeLorenzo, Lois Eckert, Joyce Gutierrez, Carol Henry, Penny Henry, Fran Huffman, Mary Lank, Pat Meyers, Jackie Nowak, Sheila Rouse, Judy Vetock, and Maryann Wilson.

**CAROL L. HENRY VP, Programs**



## Helpful Tips and Techniques

**Carol Henry:** The best way to photograph flat artwork is to use natural light. If possible, bring the piece outside and find an open but slightly shady area. The shade helps protect the artwork from sun damage or curling. Place a white or black poster board on the ground near where the shade ends, as a background, then place the art on top of the poster board. If the art cannot come outside, it is still best to use natural light from a nearby window if you can or light from a room where the art is hanging.

**Sharon Kuntzman:** To make dots, use a size 14 crochet hook.

**Joanne Kilduff:** Joanne shared this tip that she learned over 11 years ago in a beginners class at Steph's with us one day at the Arlene Linton seminar.

She uses Loew-Cornell's "**Better Way**" **Brush Cleaning Fluid and Oil Paint Solvent to remove graphite lines.** The important part is "for oil paint" as they also make an acrylic version and that would wipe off your paint. She uses a wadded up paper towel wet with this solution with a gentle circular motion over well-dried painted areas. Available usually in Michael's. Great use for a 40% off coupon!!!

*Carol Henry.*

*Newsletter Reporter, PWP*



**REMEMBER TO BRING YOUR APPETITE TO THE JULY MEETING — THE CHAPTER WILL BE PROVIDING GRILLED HOTDOGS AND OTHER PICNIC FARE.**

## JULY MEETING REMINDERS



### Bring to the July Meeting

- \_\_\_\_\_ Usual Painting supplies
- \_\_\_\_\_ 4" X 6" Painting surface for "Mini" Painting
- \_\_\_\_\_ Check out and Return Library books
- \_\_\_\_\_ Items for Business Roundtable
- \_\_\_\_\_ Show & Tell Item
- \_\_\_\_\_ Guest(s)
- \_\_\_\_\_ Checkbook/Money for Meeting Raffle
- \_\_\_\_\_ Check out and return Memory Boxes
- \_\_\_\_\_ Check out and return Treasure boxes
- \_\_\_\_\_ Pick up Paint for Freedom cards at Meeting
- \_\_\_\_\_ Bring back Surface Exchange Item

### Sign Up/Reminders:

- \_\_\_\_\_ Memory/Treasure Boxes to paint
- \_\_\_\_\_ Ginger Edwards Seminar Sept 30—Oct 2
- \_\_\_\_\_ Tea Committee
- \_\_\_\_\_ Retreat Com 2012mittee
- \_\_\_\_\_ 2013 Luncheon Committee
- \_\_\_\_\_ Historian or Asst Historian
- \_\_\_\_\_ Web Designer
- \_\_\_\_\_ Room Set up Coordinator
- \_\_\_\_\_ Remember to clean your areas
- \_\_\_\_\_ Remember to use appropriate forms when registering, paying money or submitting expenses.
- \_\_\_\_\_ July 9th Road Trip to Frederick, MD
- \_\_\_\_\_ Jane Allen's Triptych Paint In
- \_\_\_\_\_ Linda Kapp's Santa Gourds Paint In

## Walking Tour

**We still have three spaces left for the "carpooling" field trip on Saturday, July 9, 8 am. Member cost is \$7; guest cost is \$12. Contact me for the details if interested.**



*Carol L. Henry  
Programs, PWP*

**Happy Birthday**



## Fundamentally Fun & Functional 2012 PWP's Painting Retreat

Please make a note to attend the next Penn's Woods Painters Retreat which will be held Feb 3 thru Feb 5, 2012 in the beautiful foothills of the Blue Mountains at the Philip Bongiorno Conference Center.

Our theme this year is Fun & Functional...No chotchkies...we'll be painting items that you'll enjoy wearing or using.

The next planning meeting for the retreat committee will be at Dee DeLorenzo's 214 E. Main St, Mechanicsburg on Tuesday, July 12th at 6:30 p.m. Anyone interested in helping a little or a lot is welcome to attend. Please give me a call or send an e-mail with any questions.

The cost for the weekend retreat is as follows:

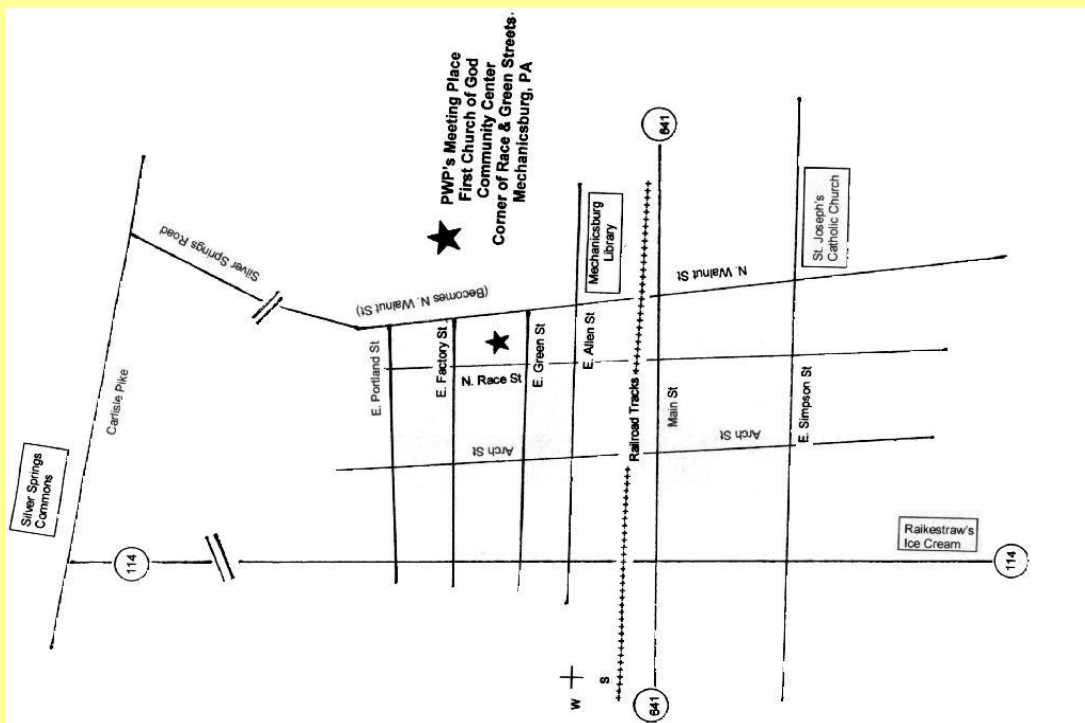
Private Room:	\$195 (\$65 x 3 payments)
Double Occupancy:	\$180 (\$65 x 3 payments)
Triple Occupancy:	\$165 (\$55 x 3 payments)

These costs include 2 nights' accommodation, Friday dinner, 5 meals on Saturday & Sunday, paint surfaces and paints! Also included at no extra charge is fun, friendship and loads of laughter. All attendees will be required to register for all three days. Applications for the Retreat will be in the September Newsletter. To ease budgeting for the event, you can make 3 payments due not later than September 24<sup>th</sup>, November 21<sup>st</sup> and January 21<sup>st</sup> (The scheduled PWP meeting dates)

*Dee DeLorenzo*

Ruth Sechrist	07/20
Pat Meyers	07/27
Florence Byers	07/30
Tracey Zimmerman	07/30
Joyce Gutierrez	08/03
Eileen Betton	08/04
Wendy Beckmann	08/08
Dee DeLorenzo	08/12
Fran Huffman	08/14
Mary Ann Wilhelm	08/14
Sue Birchall	08/18
Karen Gleim	08/19
Betty Lou Zimmerman	08/30
Jane Ann Nagode	08/31
Jackie Nowak	09/02
Penny Henry	09/03
Patricia Sheely	09/11

### Directions to PWP's Meetings



**Penn's Woods Painters meet in the basement (easily accessible by elevator or the stairs) of the First Church of God Community Center at 201 E. Green Street in Mechanicsburg.**

# 2011 PWP CALENDAR

July 9	Saturday	Field Trip — Frederick, Maryland
July 18	Monday	General Membership Meeting — Darlene Ferrier Demo of Summer-Themed Mini Painting—Picnic
August 8-13	Mon-Sat	Hoot (Heart of Ohio Tole Chapter Convention)
*August 15	Monday	Board Meeting
August 20	Saturday	Paint-In—Linda Kapp—Santa Gourds
September 24	Saturday	General Membership Meeting - Hilary Felinski Paint for Freedom Cards
Sept 30, Oct 1 & 2		Seminar — Ginger Edwards
October 5-9	Wed-Sun	Net (New England Traditions Convention)
Sheila Rouse's Paint—in—Maxine's Santa Ornaments—Postponed—date TBD		
October 15	Saturday	Paint-In –Jane Allen Nativity Triptych (Rescheduled)
*October 17	Monday	Board Meeting
October 23	Sunday	Decorative Arts Tea and Art Show
November 21	Monday	General Membership Meeting – Hand painted pin Exchange & Cookie sharing festivities!
*December 19	Monday	Board Meeting
<b>Looking Ahead</b>		
January 21, 2012	Saturday	General Membership Meeting
Feb 3-5, 2012	Fri-Sun	Fundamentally Fun & Functional Painting Retreat

*Board meetings at Sue Wenning's residence at 7:00 pm, 1012 South Market Street, Mechanicsburg*



## JUDY DIEPHOUSE SEMINAR REMINDER — SEPTEMBER 7, 8 & 9, 2012

Jackie Nowak encourages PWP members to start searching their basements, attics, yard sales and flea markets for “paintable” wood chairs (similar to the one she painted for last year’s chair-ity event. One of the projects for the Judy Diephouse seminar will be done on a chair. Jackie also has a “chair-squad” looking for such chairs to be sold in PWP’s General Store as they become available.

# PWP Officers & Committee Chairs

## Officers:

President	Susan Wenning	421-8250	<a href="mailto:susanwenning@comcast.net">susanwenning@comcast.net</a>
Vice President Programs	Carol Henry	249-7206	<a href="mailto:Clhenry67@aol.com">Clhenry67@aol.com</a>
Vice President Membership	Linda Kapp	580-8547	<a href="mailto:kapps33@comcast.net">kapps33@comcast.net</a>
Secretary	Mary Ann Couch	766-0918	<a href="mailto:coumac@aol.com">coumac@aol.com</a>
Treasurer	Lois Eckert	766-8017	<a href="mailto:eck1035@aol.com">eck1035@aol.com</a>

## Committee Chairmen:

Decorative Arts Tea	Darlene Ferrier	599-5516	<a href="mailto:edferrier@yahoo.com">edferrier@yahoo.com</a>
Historian	Sheila Rouse	697-7025	<a href="mailto:toleheart@pipeline.com">toleheart@pipeline.com</a>
Hospitality	Pat Sheely	766-3151	<a href="mailto:gsp1957@verizon.net">gsp1957@verizon.net</a>
Library	Hattie Ogle	258-3438	<a href="mailto:ogle@pa.net">ogle@pa.net</a>
Memory Boxes	Dottie Shultz	766-0457	<a href="mailto:dshultz627@verizon.net">dshultz627@verizon.net</a>
Newsletter	Sheila Rouse	697-7025	<a href="mailto:toleheart@pipeline.com">toleheart@pipeline.com</a>
Paint-Ins	Dee DeLorenzo	728-9470	<a href="mailto:ddeles@verizon.net">ddeles@verizon.net</a>
Publicity	Linda Deardorff	737-2997	<a href="mailto:l.deardorff@verizon.net">l.deardorff@verizon.net</a>
Seminars	Jackie Nowak	766-6079	<a href="mailto:jlnowak@aol.com">jlnowak@aol.com</a>
Treasure Boxes	Barb Lehman	795-9845	<a href="mailto:RBLehman2@verizon.net">RBLehman2@verizon.net</a>
Ways and Means	Hilary Felinski	730-9220	<a href="mailto:hilaryfelinski@comcast.net">hilaryfelinski@comcast.net</a>
Past President	Jackie Nowak	766-6079	<a href="mailto:jlnowak@aol.com">jlnowak@aol.com</a>
Webmaster	Sheila Rouse	697-7025	<a href="mailto:toleheart@pipeline.com">toleheart@pipeline.com</a>
2012 Retreat Chair	Dee DeLorenzo	728-9470	<a href="mailto:ddeles@verizon.net">ddeles@verizon.net</a>

## Brush Strokes Newsletter Committee

*Sheila Rouse*  
Editor & Layout

*Mary Jane Wheeler*  
Distribution

*Karen Wolford*  
Co-editor

*Jackie Nowak*  
Proof Editor

*Carol Henry*  
News Reporter



*Barbara Lehman*  
Advertising

### ADVERTISING in Brush Strokes (Published Bi-Monthly)

Color Business Card \$ 7/Issue \$ 30/6 Issues  
Black/White Business Card \$ 5/Issue \$ 25/6 Issues  
Color Quarter Page \$10/Issue \$ 45/6 Issues  
Black/White Quarter Page \$ 7/Issue \$ 35/6 Issues  
Color Half Page \$14/Issue \$ 70/6 Issues  
Black/White Half Page \$10/Issue \$ 55/6 Issues  
Color Full Page \$25/Issue \$120/6 Issues  
Black/White Full Page \$20/Issue \$100/6 Issues

Please send camera ready ad along with check made payable to Penn's Woods Painters to Barbara Lehman, 805 Shuler Street, Mechanicsburg, PA, 17055. Brush Strokes, the Newsletter for Penn's Woods Painters is published six times a year with a circulation of approximately 125 copies. In addition, Brush Strokes is posted on the chapter's web site. PWP's advertising rates are very reasonable and offer a targeted audience for those wishing to advertise their business, shop, classes, woods, painting supplies, or other services. If you would or someone you know benefit from advertising in Brush Strokes, please contact Barb Lehman, Business Manager, at 717-795-9845 or [rblehman2@verizon.net](mailto:rblehman2@verizon.net)

## Thank-You Jackie for all your hard work getting our Seminars Ready!

### Surfaces Now Available to Order for Ginger Edwards Seminar

We now have the surfaces available for you to order for Ginger Edwards' seminar September 30, October 1 & 2.

Fridays' "Rose Workshop" surface will be a 15-16" diameter hexagon small table. The cost will be \$35.00.

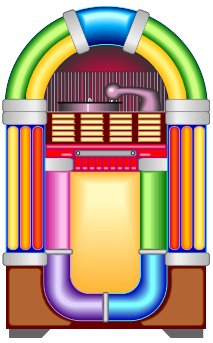
Saturday, a flip top hinged wood box, 17" X 9 1/2" X 4 1/2", will be the surface for "His Eye Is On The Sparrow". The cost is \$32.00.

Sunday's project "Poppies" will be on a wood scalloped oval tray costing \$16.00.

Registration is filling up quickly so don't procrastinate if you want to have the opportunity to study with Ginger Edwards. The Rose workshop on Friday is now available only in the "all three days" registration. Registration for Friday only is already filled. A registration form is included in this newsletter. You can also find the form on our web site

[www.pennswoodspainters.com](http://www.pennswoodspainters.com).

*Jackie Nowak*  
Seminar Chairman



## Save the Date... "Painting to the Oldies"

On October 23, 2011 the PWP Chapter will be hosting our annual tea and art show, "Painting to the Oldies". In celebration of National Decorative Painting Month, PWP welcomes all members and their guests to participate in our 2011 Tea and Art Show to be held at the Camp Hill Methodist Church located on 22<sup>nd</sup> Street in Camp Hill, PA.

In order for chapter members to have time to paint their entries, the committee is providing the following list of categories for you to choose your subject(s). Remember, all PWP members, in good standing, are eligible to display up to three painted pieces in the art show.

1. Animals
2. Birds
3. Christmas
4. Floral
5. Folk Art/Primitive
6. Fruit
7. Holidays
8. Land & Seascapes
9. Original Design
10. Portraits/People
11. Stroke Work
12. Trash to Treasure
13. Wearable Art
14. Whimsical

So... search your stash for surfaces, warm up those paint brushes and get ready to attend one of the most memorable PWP Tea and Art Shows. Stay tuned for more details in the July Newsletter.

**2011 Tea & Art Show Committee**



## PAINT FOR FREEDOM

So far, 20 folks have signed up for the September program. The surfaces (cards) will be distributed at the July meeting so that they can be base-coated prior to the September meeting. If you haven't signed up yet and would like to do so, please let me know ASAP. If I can get more surfaces I will and then we can make arrangements for you to pick it up from me prior to the September meeting.

The instructions and pattern for this card designed by Toni McGuire, CDA are in **Issue 1, 2008**, of the *Decorative Painter*. If you don't have this issue, please let me know and I will get you a copy of the directions.

The original instructions specify the basecoat as Payne's Gray. Alternate blue background colors include Deco Art's Uniform Blue, True Blue, Blueberry, Deep Midnight Blue, or Midnight Blue. I think I would use Payne's Gray mixed with your selected background color for the shading.

Thanks,

*Hilary Felinski*



## Flights of Fancy: Celebrating 40 Years of Painting

Join us May 14-19, 2012 in Wichita, Kansas as we celebrate the Society of Decorative Painters' Ruby Anniversary! Make plans now to share this exceptional occasion with your SDP family.

Thank you for sharing your passion for painting with us!

Board of Directors  
Society of Decorative Painters

## Santa Gourd Paint-In Registration Form

August 20, 2011-Taught by Linda Kapp

9am—4pm at The

First Church of God Community Center

This delightful Santa Claus, designed by Sammie Crawford, is painted on gourds. Linda will have gourds available for purchase at the July meeting for \$10. They have been cleaned and cut and are ready to paint. Preparation instructions will be available at that time as well.



### Class fee is \$20

Name: \_\_\_\_\_

Address: \_\_\_\_\_

Phone No. \_\_\_\_\_ E-Mail: \_\_\_\_\_

Check enclosed: \_\_\_\_\_ \$20 class fee

Please bring this form to the July meeting or send this form and your payment (payable to PWP) before August 15th to:

Dee DeLorenzo, 214 E. Main Street, Mechanicsburg, PA 17055

**The Sheila Rouse Santa Ornaments Paint In has been postponed, and will be held in 2012**

**We Miss you Sheila!**

## Nativity Triptych Paint-In Registration Form

Originally scheduled for June has been

Rescheduled to October 15, 9am—4pm

The First Church of God Community Center

Taught by Jane Allen

The cost of the wood for the triptych is an additional \$12.50 and may be purchased from Jane Allen.



The patterns and wood will be available for pick up at the September meeting.

### Class fee is \$20 (includes pattern packet)

Name: \_\_\_\_\_

Address: \_\_\_\_\_

Phone No. \_\_\_\_\_ E-Mail: \_\_\_\_\_

Check enclosed: \_\_\_\_\_ \$20 class fee

This Paint-In is limited to the first 30 members registering according to the date on the envelope. Please bring this form to the September meeting or send this form and your payment (payable to PWP) to:

Dee DeLorenzo, 214 E. Main Street, Mechanicsburg, PA 17055

Below is the proposed 2011 budget for 2011. This piece of information is provided for you after being developed by the board earlier in the year. Please review as we will have a membership vote to approve the budget as published at our July Meeting.

## PWP 2011 PROPOSED BUDGET

### INCOME

Membership Income (Dues)	\$ 2,000.00
Newsletter (Ads)	\$ 150.00
Paint-Ins	\$ 1,050.00
Programs	\$ 350.00
Retreat (2012)	\$ 4,000.00
Seminars	\$ 16,000.00
Treasure Boxes	\$ 100.00
Ways and Means	\$ 4,400.00
<b>TOTAL</b>	<b>\$ 28,050.00</b>

### EXPENSES

Administration	\$ 1,000.00
Donations	\$ 900.00
Hospitality	\$ 200.00
Library	\$ 100.00
Membership	\$ 100.00
Memory Boxes	\$ 600.00
Newsletter	\$ 1,500.00
Operations	\$ 1,200.00
Paint-Ins	\$ 1,000.00
Programs	\$ 850.00
Retreat (2012)	\$ 4,000.00
Seminars	\$ 14,400.00
Treasure Boxes	\$ 100.00
Ways and Means	\$ 2,100.00
<b>TOTAL</b>	<b>\$ 28,050.00</b>



## Deb Kreiger Shares her Watercolor Talent at "Art on the Farm"

PWP member, Deb Kreiger recently had an opportunity to showcase her art skills at the annual Art of the Farm event held by Carlisle Arts Learning Center and PA Assn for Sustainable Agriculture Saturday, June 11th, 2011.

Deb described the event on her website blog: "What a nice event! What better way to support local whole foods and local artist! These are two of my passions! These sheep were a joy to watch and paint. This fellow I was told was named "No Tag". A young gentleman who takes care of the sheep was the highest bidder for this painting. He wanted it to remember his two years working on the Dickinson College Farm. I was very honored. What a wonderful group of students and staff and a great project to support! Can't wait till next year!"

For more information about the artist, visit [debkrieger.com](http://debkrieger.com).



"cancer cell" count was down to 28 — everyone's prayers and positive thoughts are working. It's amazing to think that that number was well over 2,000 at the beginning of this journey.

What a difference a year makes. Last year on my birthday I was depressed at being 60. THIS year I celebrated (with LOTS of cards from you) the mere fact of having a birthday — WHOOPEE!

Don't give up on me yet because with your continued support, I'm going to conquer this beast.



## Blessings of Cancer...an Update from Sheila Rouse

I admit that these "blessings" are getting old. I'm ready for my hair, eyebrows and eyelashes to grow back, the feeling in my fingers and toes to return, and my energy to improve.

Okay..no more complaining...it could be worse...I could be going through all this without the benefit of the wonderful support group known as PWP. Even the nursing staff at the Women's Cancer Center know how wonderful you are!!!! I am almost to the end of my chemotherapy (five more sessions) and continue to see improvement. My last



Arelene Linton (in the orange top) is pictured with members and guests of Penn's Woods Painters and their project, "Piscan Lace" from the second day of a three-day seminar she taught at their chapter in Mechanicsburg, PA, in June.

**CAROL L. HENRY**



Scottie Foster is pictured here also in orange with members and guests of PWP along with their project "Renaissance Jewelry Box". This was a two day seminar Taught in April 2011. Scottie also taught a Bauernmalerie Tray during her three day visit with us.

**GINGER EDWARDS SEMINAR**

**Friday, Saturday, Sunday**

**September 30, October 1, 2, 2011**

9:00 AM – 5:00 PM

First Church of God Community Center  
Mechanicsburg, PA

**Class Fees:**

PWP Chapter Members: \$70 each day, or \$200 all three days

To claim the chapter member discount, you must be a member of PWP and also a member of SDP

Non-members: \$80 each day, or \$230 all three days



**“Rose Workshop”**

Friday

One day project

Surface \$35



**“His Eye is on the Sparrow”**

**Morning Glories**

Saturday

One day project

Surface \$32



**“Poppies”**

Sunday

One day project

Surface \$16

Name \_\_\_\_\_ SDP# \_\_\_\_\_ if applicable

Address \_\_\_\_\_

City & State \_\_\_\_\_ Zip \_\_\_\_\_

Phone# ( ) \_\_\_\_\_ Email Address \_\_\_\_\_

Space limited to first 28 people, as determined by the envelope postmark, others will be placed on a wait list. Classroom doors will open at 8:30 am each day. Class will begin at 9:00 am.

Coffee, tea, and breakfast pastry will be available each day.

A light lunch is available each day, donations are accepted towards the cost.

Parking is available in the parking lot across the street from the community center.

Payments are non-refundable.

Please indicate days of attendance and include payment with registration form.

Payment confirms your reservation in the class.

**Mail payment (payable to PWP) & registration form to:**

**Jackie Nowak, 53 Longwood Drive, Mechanicsburg, PA 17050-7973**

Amount enclosed \$ \_\_\_\_\_

Class Fee:     \_\_\_ Friday   \_\_\_ Saturday   \_\_\_ Sunday   \_\_\_ All three days

Surface Fee:   \_\_\_ Friday   \_\_\_ Saturday   \_\_\_ Sunday   \_\_\_ All three days

For additional information, email [PaintinginPA@aol.com](mailto:PaintinginPA@aol.com)

