

Brush Strokes



Penn's Woods Painters Newsletter

www.pennswoodspainters.com

South Central Pennsylvania Chapter of the Society of Decorative Painters

Vol. 22 No. 3

May/June 2011

Next General Membership Meeting: Saturday, May 14, 2011

Place: First Church of God Community Center

201 E. Green St., Mechanicsburg, PA

Social: 9:00 a.m. Business Meeting: 9:30 a.m.

"Merry May"

Calligraphy & Watercolor Pencil Christmas Cards With Debbie Cornman

Wasn't it fun painting on the resin beads with Jane Allen and her "team" at the March meeting and going home with a unique bracelet!!

Let's step outside the "box" again and get a "twofer" taught by Debbie Cornman on Saturday, May 14. Debbie will teach two Christmas cards that will incorporate the techniques of calligraphy and watercolor pencils. Each member is responsible for bringing the following supplies: #3 round brush, 6-inch ruler, rubber eraser, pencil sharpener, tracing paper, well-used gray graphite, stylus, water basin, and paper towels. You will also need to bring or purchase at the meeting specific supplies for these techniques: 6B drawing pencil, chisel-edged marker (black, green, red, or brown), and four watercolor pencils (red, green, yellow, and purple). If you have a Calligraphy penholder with C Nibs #2 and #3 and Speedball black, red, green, or brown India ink, you can use that instead of the chisel-edged marker. Below are the supplies Debbie



is using for this project that will be available for purchase. The complete kit can be purchased for \$5 or each item is \$1. You will need your OWN 6B drawing pencil and marker for the calligraphy; the watercolor pencils can be shared with a friend if necessary. The chapter will provide iced tea, water, coffee, hot tea, and dessert. A soda machine is available in the building. Bring a bagged lunch, and come out for a fun day of creativity!!

KIT (\$5); Individual Items (\$1)

6B drawing pencil
Speedball Elegant Writer 2.5 (Medium) in Black, Green, or Red (chisel edge)
Derwent Watercolour Crimson Lake (#20)
Derwent Watercolour Lemon Cadmium (#2)
Derwent Watercolour Juniper Green (#42)
Derwent Watercolour Dark Violet (#25) or Imperial Purple (#23) (See page 9 for more information.)

Carol L. Henry, Vice President, Programs

LOOKING AHEAD!!

PWP'S July General Membership Meeting

MONDAY, JULY 18, 2011

Program: Indoor Picnic/Demo of Summer-Themed Mini Painting

Social: 6 p.m. Business Meeting: 7:00 p.m.



Pat Meyer's painted violin was themed "Operatic Aria".

TWO SPECIAL PWP MEMBERS SHINE for the Harrisburg Symphony Orchestra

PWP Members, Jane Allen and Pat Meyers, were asked last fall to paint a violin for a fundraiser for the Harrisburg Symphony Orchestra. Their painted violins were among sixteen auctioned off at the Painted Violin Jazz Brunch on Sunday, April 3, 2011. In addition, Pat's painted violin was made into note cards that were sold for \$15/pack for ten cards. All proceeds benefited the symphony.

The sixteen artists were from the Central Pennsylvania region, and were asked to interpret a classical/pop theme through their painting.



Jane Allen's painted violin was themed "Winter Music Handel".



Gratitude Expressed at Luncheon for PWP Memory Box Program

We delivered 30 boxes to Harrisburg Hospital and 3 boxes to the Carlisle Regional Medical Center. Thanks to everyone for painting boxes. Keep up the good work.

In order to show their gratitude for the volunteer force, Pinnacle Health held an appreciation luncheon at the West Shore Country Club on Thursday, April 28th. In spite of

flooding and other obstacles, five of our members were able to attend. Pat Meyers, Mary Ann Wilson, Lois Eckert, Fran Huffman, and Penny Henry represented Penn's Woods Painters and accepted thanks for our Memory Box Program. Penny reported that lunch was delicious and it was wonderful to be in the company of such generous people.

Dottie Shultz,
Memory Box Chair

2012 Painting Retreat Philip Bongiorno Conference Center, Carlisle PA

Please mark your calendars to attend the next Penn's Woods Painters Retreat which will be held Feb 3 thru Feb 5, 2012 in the beautiful foothills of the Blue Mountains at the Philip Bongiorno Conference Center.

The final cost for the weekend is yet to be determined, but should be close in cost to last year's price which ranged between \$150 and \$190, depending on accommodations. All attendees will be required to register for all three days. To ease budgeting for the event, you can make 3 payments due not later than the September, November and January PWP meetings.

Dee DeLorenzo
2012 Retreat Chair



PWP's annual retreat provides a fun, informal environment to take classes, enjoy excellent meals and get to know fellow members.

Thank you to everyone who helped in making our 1st Annual Perfectly Wonderful Purses Luncheon & Auction truly Wonderful. The event was very successful with lots of our attendees asking if we plan to do this again! Hilary did a fabulous job and is ready to pass the baton to the committee which will be re-forming soon to start the planning for Autumn 2012.

I'd also like to thank Jane and Linda for making a whole bunch of us bead crazy at our March meeting – what, we didn't have enough surfaces?

Your Board members are very busy planning events for the next several years. Some amazing planning is going on, and all of it for you! Yes, YOU! You, as a valued member of PWP benefit from all these wonderful events. In this newsletter you will find a list of Committees who need another member to get the job done. Please sign up for a Committee that needs your talents. If you have not had a chance to attend a Seminar this year, there are 2 more chances this year. This Committee has outdone themselves in the talent they have brought right to our own back door for 2011. Sign up soon, we anticipate a full house for all of them.

Water, water everywhere, including the basement in many of our houses and at the Community Center. But, never fear, it's been all cleaned up and ready for our May meeting.

Regards,
Susan Wenning

*Unless someone like you cares a whole awful lot, nothing is going to get better.
It's not. ~Dr. Seuss*



HEIRLOOMS FROM THE HEART

2011 Seminars

Heather Reddick
Sept 20—22

Heidi England
October 7—9

Ronnie Bringle
October 14—16

Brenda Stewart
October 21—23



We carry a large variety of top quality wood surfaces. Check our website for updates and new products including our new metal art.



2677 N. Old Trail, Shamokin Dam, PA 17876 • 570.743.4141
heirloomstudio@pa.net • www.heirloomsfromtheheartstudio.com
Orders: 866-772-2667

TREASURE BOXES

Want to make a child smile? Please continue to paint Treasure Boxes for the children at the Shriners and other local hospitals. The object of PWP's program is to create hand painted "treasure boxes" for youth less than 18 years old who are receiving care at the Shriners Hospital for Children in Philadelphia. These young patients are often given small gifts to divert their attention from their pain.

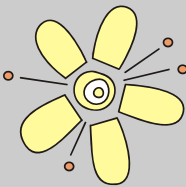
I recently delivered 22 boxes to the Zembo Shrine for them to deliver to the Philadelphia Children's Hospital.

Treasure Boxes are containers the youngsters can use to store their toys and take them home. All members are invited to join in the fun and help this worthy cause. The process is sim-

ple. Treasure boxes should be able to fit into the drawer of a hospital bedside table. Shoe boxes, craft or photo storage boxes (available at craft stores) are the correct size. The boxes should be painted with a design appropriate for a boy or girl under 18 years of age. If you plan to use a copyrighted design, please obtain permission from the artist. Boxes may also be decoupage, jeweled, or simply decorated with stickers. The photo boxes at A.C. Moore and Michaels are just the right size to sit on the table beside the beds. Look for special sales on the photo boxes at these stores.



Barbara Lehman
Treasure Box Chair



Thanks to everyone for all the cards, prayers and good wishes as I recover from hip replacement surgery. Your support is greatly appreciated.

Dottie Shultz

Membership Report

As of April 23, 2011, we have 94 members. This is an increase of 12 member renewals since our last newsletter.

PWP Directories have been emailed to those folks who selected to receive their newsletters electronically. Hard-copies of the directory will be available at the upcoming meetings for those who would like one — just see me.

There is one addition and one correction to the directory.

Please add: **Sheila Rouse**
321 S Market St
Mechanicsburg, PA 17055
717-697-7025
toleheart@pipeline.com



Also, please update **Mary Ann Wilson's** home phone number to 717-776-1143.

Linda Kapp
VP of Membership

September Program: Paint for Freedom Cards

Here's a picture of the Paint for Freedom card that we'll be doing as our September program:

The instructions and pattern for this card are in **Issue 1, 2008**, of the Decorative Painter.

You'll need to sign up for this program at our May meeting, so we'll know how many cards to order. Cards will be distributed at our July meeting so they can be basecoated before our September meeting. You'll also want to dig out your copy of Issue 1, from 2008. If you were not a member of SDP in 2008, please let me know.



Payne's Gray. Alternate blue background colors include Deco Art's Uniform Blue, True Blue, Blueberry, Deep Midnight Blue, or Midnight Blue. I think I would use Payne's Gray mixed with your selected background color for the shading.

My brother is heading back 'East', so I'm particularly aware of the impact on our service folks, and their families, and I love the idea that we can say a special thank you for their service. I'm sending a PFF card out to one of Chris's guys, who was seriously hurt in Iraq. Painting this Paint for Freedom card is one way that we can say our *Thank You* to our service members. I am hopeful

that you will sign up to paint this card from the Heart of Central Pennsylvania.

The original instructions specify the basecoat as

Hilary Felinski



PWP MEMBER FEATURED IN ART EXHIBIT

Darlene Ferrier's work will be featured in an exhibit of watercolors and oils through the month of May at the Frame Connection & Gallery, 18 E. Main Street, Hummelstown. Their hours are Wednesday thru Friday, Noon to 5:00pm and Saturdays, 10:00am to 3:00pm.

LIBRARY REPORT

This is just a reminder for any member who has checked out materials from the Library:

- a. Books and tapes are due to be returned at the next general business meeting.
- b. A 5 cent per day late charge will be assessed.
- c. Borrowers will be held accountable for the damaged or lost library items.

Please be considerate and follow the rules. Other members may want to check out the same item/items you may have. Thank you!



Hattie Ogle
Library Chair
717-258-3438
ogle@pa.net



Penn's Woods Painters Positively Wonderful Purses

The results of our 2011 Fundraiser are in — We had 47% of our members participate! What a record! I don't know of any group that can boast of that kind of participation rate! You are an amazing group of people who really care about your chapter —and it shows with this kind of participation. Thank you very much — the words may sound trite, but they are heartfelt! Those who participated will receive their exclusive pins at the May meeting.

We sold 111 tickets with 28 members included in that number. That's about 30% of you who could attend - another wonderful example of participation.

Our 50/50 winner went home with \$250.00!

Our door prize winners are :

Dee DeLorenzo - Beach Bums
Elaine Mallios - Cheri Rol print
Joanne Lamm - Ann Kingslan print
Dottie Shultz - the stunning shawl and purse that Karen Wolford crocheted for us.

I know, I know, you're really interested in learning how we did, dollar wise....

Well, folks, I am extremely pleased to tell you that we contributed over **\$3,200** to our bottom line.

I want to take a sentence or two to thank each member of the committee for their efforts and their support while we grew through this effort - this success could not have happened without the teamwork that we experienced. It was terrific to work with this committee: Sue Wenning, Dee DeLorenzo, Mary Lank, Penny Henry, Sheila Rouse, Karen Wolford and me. And thanks to Doris Kohler for her initial guidance and direction as well.

Please remember to thank your board members, too - they supported the idea of this fundraiser and from the beginning had committed to providing both 'Purses' and Silent Auction Items.

What a wonderful chapter we have - let's keep the momentum going! Karen Wolford has offered to co-chair for next year - another thank you to her for stepping up for that task! Karen will be looking for volunteers to be on her committee — so let her know if you're interested!

Thank you, too, to each of our Board members. As usual, they were the first to agree to provide purses and Silent Auction.

In addition, 30% of our membership attended the luncheon. Another tremendous turnout! While we had several folks who bought tickets based on the newspaper articles, most of our tickets were sold by our members — another thank you to those who brought our friends, neighbors and co-workers!

I have already had folks (non painters) asking me to keep them informed as we plan our next successful fundraiser for 2012 - another measure of our success!

Thank you, one and all, for helping make this fundraiser as successful as it has been.

**MINUTES OF THE GENERAL MEMBERSHIP MEETING
PENNS WOODS PAINTERS CHAPTER
MARCH 21, 2011**



Sue Wenning, President, called our meeting to order at 7:25 pm. Sue welcomed our members and guests.

September Meeting Minutes –There was a correction under Seminars. The paint said American and it should have been Americana. A motion was made by Hilary Felinski to approve the minutes from the September meeting as corrected. Dottie Shultz seconded it. The motion carried.

Treasurer's Report – **Lois Eckert** reported as of 3/21/2011: Beginning Balance-\$5759.01: Income \$5600.00: Expenses - \$2119.09 with an ending balance of \$9240.01. The report will be filed for audit.

Presidents Report –Sue Wenning

Vice President – Programs-Carol Henry : Welcomed everyone to the program. She thanked Jane Allen and all of her helpers who worked so hard on putting everything together. “Painted Daises on Bracelet”
Deb Cornman will present the program in May. It will be a Christmas Card with Calligraphy & Watercolor Pencils. We will have some supplies for sale. If you sell anything from the Business Round Table, 10% is to go to the Chapter.

Vice President – Membership – Linda Kapp: Currently we have 93 members. If you receive a newsletter on the mail Linda will give you a hard copy of the Directory.

Committee Reports

- **Decorative Arts Tea – Darlene Ferrier/Jane Allen/Doris Kohler**: Darlene is looking for volunteers for the committee.
- **Historian – Shelia Rouse**: no report
- **Hospitality – Pat Sheely**: Thank you to those who brought cookies for tonight's meeting.
- **Librarian – Hattie Ogle**: Reminded everyone that if you check out a book or tape and return it late there will be a 5 cent a day late fee.
- **Memory Boxes – Dottie Shultz**: Thanked all for bringing back their painted Memory Boxes. She also asked that the boxes please be signed.
- **Newsletter – Sheila Rouse**: Sue Wenning thank Karen Wolford for her help with the newsletter.
- **Paint Ins – Dee DeLorenzo**: We have three Paint-Ins to come. Jane Allen, Linda Kapp and Shelia Rouse will be presenting them.
- **Retreat- Dee DeLorenzo**: Dee is looking for committee members for the retreat. There will be a meeting at her house to kick off the planning. It will be April 28 at 6:30.
- **Publicity – Linda Deardorff**: Articles were submitted for our March meeting and the Scottie Foster seminar to the Sentinel and the Patriot News.
- **Seminars – Jackie Nowak**: The Mary Mader seminar will be held next Saturday, March 26. Be sure to pack your lunch. There will be two sessions to do base coating for the Scottie Foster Seminar. Saturday 1-4 at Jackie Nowak's house and Saturday 6-9 at Judy Vetock's house.
- The registrations forms are out for the Arlen Linton Seminar.
- **Treasure Boxes – Barb Lehman**: no report
- **Ways & Means – Hilary Felinski**: Tonight's raffle tickets netted \$105. As of tonight 100 tickets have been sold for the April 2 Luncheon. This is the last night to purchase Luncheon tickets. There are 38 Silent Auction Items and 55 Purses for the Chinese Auction.

New Business: At the last Board meeting Linda Kapp brought up the problems we have with so many members waiting to the new calendar year to finally pay their dues-delay in printing the directory, cash flow, etc. The Board proposed a late fee of \$5 if dues are not paid by the November 1 deadline. This was presented to the membership for their input. After discussion it was referred back to the Board for further discussion.

Old Business: none

There being no further business Dottie Shultz made a motion to adjourn the meeting. Hilary Felinski seconded the motion. The meeting was adjourned at 8:05 PM.

Respectfully Submitted
Mary Ann Couch
Secretary



**PENN'S WOODS PAINTERS
TREASURER'S REPORT
March 21, 2011 to April 18, 2011**

<u>BEGINNING BALANCE</u>	<u>\$ 9,240.01</u>
<u>INCOME</u>	
Donation-Income	\$ 231.73*
Membership-Income	\$ 20.00
Seminars-Income	\$ 1,196.00
Ways & Means-Income	<u>\$ 5,439.03</u>
 TOTAL INCOME	 \$ 6,886.76
EXPENSES	
Membership-Expenses	\$ 27.54
Memory Boxes-Expenses	\$ 397.85
Operations-Expenses	\$ 599.14
Programs-Expenses	\$ 20.00
Seminars-Expenses	\$ 3,133.15
Ways & Means-Expenses	<u>\$ 3,129.73</u>
 TOTAL EXPENSES	 \$ 7,307.41
<u>ENDING BALANCE</u>	<u>\$ 8,819.36</u>

*Donations includes \$ 145.72 from Seminars (Scottie Foster donated 10% of her sales at the seminar) and donations of \$86.01 from Ways & Means.

The Ways & Means total includes \$ 963.50 donations from the silent auction.

Lois Eckert , Treasurer

Note: The bank balance may appear excessive. However, please keep in mind that we must hold funds in reserve for upcoming events.

**FACE
PAINTERS
WANTED**



Sutliff Volkswagen in Harrisburg is looking for PWP members to paint faces for their VW Open House on Saturday, May 21st, noon to 3:00 PM. They will pay the chapter \$100 for the day.

If you are willing and able to volunteer your time and talent on behalf of the chapter, please contact Sheila Rouse at (717) 697-7025 or e-mail toleheart@pipeline.com.

Due to the start of the SDP Convention on May 16, the PWP general membership meeting is one week earlier on May 14 th.



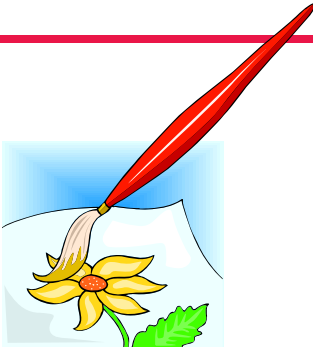
**Checks
Strongly
Preferred
but Cash
Never
Refused.**

In order to facilitate chapter bookkeeping, the PWP Board encourages members to use a check to pay for purchases whenever possible. Also, please make sure proper forms/paperwork accompany all payments.

IN PRINT



Jane Allen has another great project in the February 2011 issue of *PaintWorks Magazine*. It is a set of three different tin ornaments with chickadees on them and winter greenery.



TIPS & TECHNIQUES

by Carol L. Henry
Brush Strokes Reporter

Linda Sutphin: To keep mop brushes from shedding hairs, wrap a piece of tape into a loop and press against hairs.

Carol Henry: (1) To clean paint off of brush handles, use alcohol swabs. Be careful not to wipe off lettering. (2) Best soaps for cleaning brushes are ivory soap or "The Master's Brush Cleaner. Never use a product with phosphate, detergent, or balsam. (3) Always store brushes in a dry environment. A brush case should be breathable and allow air to flow over the brush heads. Never store brushes in a container where moisture cannot escape. Plastic is a poor storage container. Canvas and wood are two of the best storage casings.

Karen Wolford: I have a terrible time getting the plastic seals off from new bottles of paint, and I cant squeeze those lids tight enough to pull off the plastic like recommended by so many others so I take my scissors and put one end at the top of the lid and one end at the bottom of the lid and squeeze the scissors together while pushing against the plastic. It slices right thru the plastic and the plastic slips right off the bottle. It takes very little effort but does seem to work best with pointed scis-

HELPFUL LINKS

Interactive Artists Magazine (e-magazine):

<https://interactiveartistmagazine.org/>

Check out Rebecca Baer's new water basin:

<http://rebeccabaer.com/RBaerNewsletter7-2.pdf>

MAY MEETING REMINDERS



Bring to the May Meeting

- _____ Usual Painting supplies ***
- _____ \$5.00 for Calligraphy Kit (see notes below)
- _____ Bagged Lunch
- _____ Check out and Return Library books
- _____ New or renewal 2011 membership form & dues
- _____ Items for Business Roundtable
- _____ Show & Tell Item
- _____ Guest(s)
- _____ Checkbook/Money for Meeting Raffle
- _____ Check out and return Memory Boxes
- _____ Check out and return Treasure boxes
- _____ Checkbook/Money for General Store purchases

Sign Up/Reminders:

- _____ Memory/Treasure Boxes to paint
- _____ Jane Allen Paint-in June 25th
- _____ Arlene Linton Seminar June 17-19
- _____ Ginger Edwards Seminar Sept 30—Oct 2
- _____ Sign up for a committee
- _____ Sign up for 2012 Retreat Committee
- _____ Historian or Asst Historian
- _____ Web Designer
- _____ Room Set up Coordinator
- _____ Remember to clean your areas
- _____ Remember to use appropriate forms when registering, paying money or submitting expenses.
- _____ July 9th Road Trip to Frederick, MD
- _____ Sign up for "Paint for Freedom" Cards
- _____ Face Painting Fund Raiser—May 21st

***** If you wish to participate in the May 14 program, which is two Christmas cards taught by Debbie Cornman in calligraphy and watercolor pencil, please bring the following supplies:**

#3 round brush, 6-inch ruler, rubber eraser, pencil sharpener, tracing paper, well-used gray graphite, stylus, water basin, and paper towels. You will also need to bring or **purchase** at the meeting specific supplies for these techniques: 6B drawing pencil, chisel-edged marker (black, green, red, or brown), and four watercolor pencils (red, green, yellow, and purple). If you have a Calligraphy penholder with C Nibs #2 and #3 and Speedball black, red, green, or brown India ink, you can use that instead of the chisel-edged marker. The complete kit is \$5 and each individual item is \$1.

Happy Birthday



Nancy Focardi	05/13
Susan Wenning	05/14
Kathy Swigon	05/14
Melissa A. Crowther	05/25
Carol Henry	05/26
Dorothy Miller	05/26
Linda Deardorff	05/28
Amy Mogish	06/02
Carol Wilson	06/02
Donna Brown	06/03
Carol A. Lynch	06/08
Carol Payne	06/16
Hattie Ogle	06/18
Kathryn Morrow	06/27
Dottie Shultz	06/27
Linda Sutphin	06/30
Sheila Rouse	07/01
Judy Vetock	07/11



Dear SDP Member:

Have you considered serving on a SDP Committee? Would you like to be part of the 40th Anniversary team? I would love to have your help!

As your incoming SDP President, I am looking for committee members for the 2011-2012 membership year.

If this piques your interest, please let me know!

E-mail me at suebowers1112@yahoo.com and tell me which committee for which you would like to be considered.

Thanks so much,

Sue Bowers

Vice President/President Elect
Society of Decorative Painters

CHERRY CHEESE DELIGHT



Mary Ann Couch's is happy to share her recipe from the last meeting:

- 2 can of refrigerator crescent rolls
- 2 – 8 oz pks of cream cheese
- 2 cups sugar
- 1 teaspoon of vanilla
- 2 cans cherry pie filling

Pre heat oven to 425

Open one can of rolls and place in bottom of sheet cake pan
Press the perforations together

Whip together cream cheese and sugar and mix in vanilla

Spread on top of first layer of rolls

Spoon cherry pie filling on top of cream cheese mixture

Use some sugar on a surface and with the second can of rolls press the perforations together

Lay on top of cherry filling

Sprinkle some sugar on top of crust

Bake for about 40 minutes or till golden brown

Chill before serving



Blessings of Cancer...an Update from Sheila Rouse

I continue to receive God's many cancer blessings...many in the form of my special PWP friends and family. Just as your donations of meals have nourished my body (can you say comfort food!?), your cards, prayers and well wishes are nourishing my soul.

I am half way through my six months of chemotherapy and continue to be am thankful to my friends in PWP and Hearts & Hands who are helping me through it – (thank you, again, Linda Kapp and Sue Wenning, for coordinating these efforts) — especially driving me to my treatments and lab work, providing dinners for us, offering their continued prayers.

My hair is sparse from the beast known as chemotherapy but fun hats and scarves help keep the spirits high. And for special occasions I have my wig standing by. I try to get out as my energy allows — two hours appears to be my limit. It was soooooo very good to see all my friends at the luncheon!

2011 PWP CALENDAR



May 14	Saturday	General Membership Meeting – Deb Cornman – Christmas Card with Calligraphy & Watercolor Pencils Sign up for “Paint for Freedom” Cards
May 16 - 21	Monday-Saturday	SDP Conference, Kansas
June 17,18,19	Friday – Sunday	Seminar – Arlene Linton
*June 20	Monday	Board Meeting
June 25	Saturday	Paint-In—Jane Allen—Nativity Triptych
July 9	Saturday	Field Trip — Frederick, Maryland
July 18	Monday	General Membership Meeting — Darlene Ferrier Demo of Summer-Themed Mini Painting
August 8-13	Mon-Sat	Hoot (Heart of Ohio Tole Chapter Convention)
*August 15	Monday	Board Meeting
August 20	Saturday	Paint-In—Linda Kapp—Santa Gourds
September 24	Saturday	General Membership Meeting - Hilary Felinski Paint for Freedom Cards
Sept 30, Oct 1 & 2		Seminar — Ginger Edwards
October 5-9	Wed-Sun	Net (New England Traditions Convention)
October 15	Saturday	Paint-In—Sheila Rouse—Maxine’s Santa Ornaments
*October 17	Monday	Board Meeting
October 23	Sunday	Decorative Arts Tea and Art Show
November 21	Monday	General Membership Meeting – Hand painted pin Exchange & Cookie sharing festivities!
*December 19	Monday	Board Meeting
January 21, 2012	Saturday	General Membership Meeting
Feb 3-5, 2012	Fri-Sun	Painting Retreat

Board meetings at Sue Wenning's residence at 7:00 pm, 1012 South Market Street, Mechanicsburg



JUDY DIEPHOUSE SEMINAR REMINDER — SEPTEMBER 7, 8 & 9, 2012

Jackie Nowak encourages PWP members to start searching their basements, attics, yard sales and flea markets for “paintable” wood chairs (similar to the one she painted for last year’s chair-ity event. One of the projects for the Judy Diephouse seminar will be done on a chair. Jackie also has a “chair-squad” looking for such chairs to be sold in PWP’s General Store as they become available.

PWP Officers & Committee Chairs

Officers:

President	Susan Wenning	421-8250	susanwenning@comcast.net
Vice President Programs	Carol Henry	249-7206	Clhenry67@aol.com
Vice President Membership	Linda Kapp	580-8547	kapps33@comcast.net
Secretary	Mary Ann Couch	766-0918	coumac@aol.com
Treasurer	Lois Eckert	766-8017	eck1035@aol.com

Committee Chairmen:

Decorative Arts Tea	Darlene Ferrier	599-5516	edferrier@yahoo.com
Historian	Sheila Rouse	697-7025	toleheart@pipeline.com
Hospitality	Pat Sheely	766-3151	gsp1957@verizon.net
Library	Hattie Ogle	258-3438	ogle@pa.net
Memory Boxes	Dottie Shultz	766-0457	dshultz627@verizon.net
Newsletter	Sheila Rouse	697-7025	toleheart@pipeline.com
Paint-Ins	Dee DeLorenzo	728-9470	ddeles@verizon.net
Publicity	Linda Deardorff	737-2997	l.deardorff@verizon.net
Seminars	Jackie Nowak	766-6079	jlnowak@aol.com
Treasure Boxes	Barb Lehman	795-9845	RBLehman2@verizon.net
Ways and Means	Hilary Felinski	730-9220	hilaryfelinski@comcast.net
Past President	Jackie Nowak	766-6079	jlnowak@aol.com
Webmaster	Sheila Rouse	697-7025	toleheart@pipeline.com
2012 Retreat Chair	Dee DeLorenzo	728-9470	ddeles@verizon.net

Brush Strokes Newsletter Committee

Sheila Rouse
Editor & Layout

Karen Wolford
Co-editor

Carol Henry
News Reporter

Barbara Lehman
Advertising

Mary Jane Wheeler
Distribution

Jackie Nowak
Proof Editor



ADVERTISING in Brush Strokes (Published Bi-Monthly)

- Color Business Card \$ 7/Issue \$ 30/6 Issues
- Black/White Business Card \$ 5/Issue \$ 25/6 Issues
- Color Quarter Page \$10/Issue \$ 45/6 Issues
- Black/White Quarter Page \$ 7/Issue \$ 35/6 Issues
- Color Half Page \$14/Issue \$ 70/6 Issues
- Black/White Half Page \$10/Issue \$ 55/6 Issues
- Color Full Page \$25/Issue \$120/6 Issues
- Black/White Full Page \$20/Issue \$100/6 Issues

Please send camera ready ad along with check made payable to Penn's Woods Painters to Barbara Lehman, 805 Shuler Street, Mechanicsburg, PA, 17055. Brush Strokes, the Newsletter for Penn's Woods Painters is published six times a year with a circulation of approximately 125 copies. In addition, Brush Strokes is posted on the chapter's web site. PWP's advertising rates are very reasonable and offer a targeted audience for those wishing to advertise their business, shop, classes, woods, painting supplies, or other services. If you would or someone you know benefit from advertising in Brush Strokes, please contact Barb Lehman, Business Manager, at 717-795-9845 or rblehman2@verizon.net

PWP GENERAL STORE

Hi, all – I'm writing to let you know that we have some new items (and some 'good ol' boys') in the general store for our May meeting.



In anticipation of our Arlene Linton seminar, we have 30 gray palettes available for \$8.00 each. As you may know, Arlene recommends using a gray palette so you can see how your white is. In addition, we have some canvas panels, in several sizes – just in time for what's coming up in July! And, some new erasers will be available as well – not so crumbly or crumbly as most of the others.

Going forward, I am working with Jackie to see if we can have the store open for scheduled times during seminars. I will also work with Dee to see how we can work store hours for Paint-Ins.

In the meantime, please be reminded that everything in the store, other than the shirts, is taxable. The prices posted do not include tax, so that tax amount is in addition to the sales price.

Cash is always welcome, however another reminder is that we do not have a cash stash for the general store. Checks are more easily reconciled and that makes them preferred over cash, especially for larger purchases.

Hilary Felinski, Ways & Means Chair



This is one of many murals found on the side of the buildings in Frederick, Maryland.

Art & Architecture Walking Tour of Frederick, MD (Rain or Shine) Saturday, July 9, 2011, 8 a.m.

I am really excited about our “carpooling” field trip to Frederick, MD, because our guide will be arts-integrated educator Teresa Cochran, wife of the Community Bridge (trompe l’oeil mural) artist, William Cochran. We will carpool from the Giant parking lot at 830 North US 15, Dillsburg at 8 a.m. sharp. The walking will be level, at a slow pace, and there will be breaks (see itinerary below). If you have trouble standing, bring along one of the canes with the little seats on it. You can see a video of the Community Bridge on YouTube at <http://www.youtube.com/watch?v=Ht55NnOr7m4> and view William Cochran’s web site at <http://www.williamcochran.com>. I encourage you to watch the video as you can see what the Community Bridge looked like before it was painted. Cost for PWP members is \$7 and non-members is \$12 (members will be given priority) due by May 14 (complete form below). A minimum of 25 people is required to get this non-profit rate (40% discount). Limited parking is available at the Frederick Visitor Center and additional parking is available for \$8 per day at the East All Saints St Parking Garage (125 E. Saints St), which is adjacent to the Visitor Center. If you take your ticket to the Visitor Center for validation, you can get three hours of free parking. Lunch will be on your own after the tour. I am looking for volunteers to drive, especially those with vans or SUVs. A donation to each driver for gas and parking by the passengers in each car would be appreciated.

- 9:15 - 9:35 Meet at the Frederick Visitor Center, 151 S. East Street (limited parking)
- 9:35 -10:55 Walk to and tour the Community Bridge
- 10:55 -11:05 Public Art and Architecture Walking Tour, Part 1
- 11:05—Noon Coffee break and shopping
- Noon Meet at The Dreaming
- Noon -1 p.m. Public Art and Architecture Walking Tour, Part 2
- 1 p.m. Lunch on your own (Market Street and Patrick Street restaurants)

Carol L. Henry, VP, Programs

**ART & ARCHITECTURE WALKING TOUR OF FREDERICK, MD (Rain or Shine)
SATURDAY, JULY 9, 2011, 8 a.m.**

Member (\$7) Name: _____

Non-member (\$12) Name: _____

I can drive and take _____ passengers.

_____ TOTAL ENCLOSED (Make Check Payable to Penn’s Woods Painters)

Bring to May 14 Meeting or Mail To:

**Carol L. Henry
130 Dorwood Drive
Carlisle, PA 17013**





COMMITTEE MEMBERS NEEDED URGENTLY!

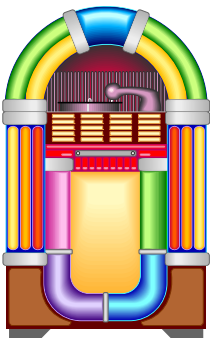
- Looking for two enthusiastic members to serve on the Program Committee through 2012. You must be able to attend an occasional Committee meeting during the day in Carlisle and help with the programs after the business meeting if necessary. If interested, call or email Carol Henry, VP, Programs.
- Looking for two physically fit members and early risers to help with the Room Set-Up for programs, Paint-Ins, and Seminars. If interested, contact Sue Wenning, President.
- Looking for a Chapter Historian, who maintains the history of the chapter in scrapbooks. If interested, contact Sue Wenning, President.
- Looking for a member to maintain the Chapter web site. If you have any experience in this area and are interested, contact Sue Wenning, President.
- Looking for a Newsletter Reporter, which entails writing articles and taking pictures for the newsletter. If interested, contact Sue Wenning, President.
- Looking for a member to understudy the Hospitality Chair and take over the duties in 2012. Duties include providing beverage and light snacks during the social hour prior to all general membership meetings. Also, assist the Seminar and Paint-In Committees if needed providing coffee, tea, and paper supplies. A subcommittee of Hospitality is the Sunshine Committee, which sends greeting cards to members when needed.

Do You Just “Belong?”

Are you an involved member, the kind who will be missed?
Do you attend meetings and mingle with the flock?
Or do you stay at home and criticize and knock?
Do you take an active part to help the work along?
Or are you satisfied to be the kind who just “belongs?”
Do you work on a committee to see there is no trick?
Or leave the work to just a few and talk about a clique?
Do you come to meetings often and help with hand and heart?
Don't be just a member but take an active part.
Think this over and remember you know right from wrong.
Are you an involved member, or do you just “belong?”

Due to family health issues, I had to cancel my reservation for HOOT this year. If interested in going to HOOT and sharing a suite with three other fellow painters at the Drury Inn, contact Linda Sutphin @ sutphinL@comcast.net or (540) 972-7554. Gotta love it--painting and shopping!!

CAROL L. HENRY
VP, Programs, PWP



Save the Date... "Painting to the Oldies"

On October 23, 2011 the PWP Chapter will be hosting our annual tea and art show, "Painting to the Oldies". In celebration of National Decorative Painting Month, PWP welcomes all members and their guests to participate in our 2011 Tea and Art Show to be held at the Camp Hill Methodist Church located on 22nd Street in Camp Hill, PA.

In order for chapter members to have time to paint their entries, the committee is providing the following list of categories for you to choose your subject(s). Remember, all PWP members, in good standing, are eligible to display up to three painted pieces in the art show.

1. Animals
2. Birds
3. Christmas
4. Floral
5. Folk Art/Primitive
6. Fruit
7. Holidays
8. Land & Seascapes
9. Original Design
10. Portraits/People
11. Stroke Work
12. Trash to Treasure
13. Wearable Art
14. Whimsical

So... search your stash for surfaces, warm up those paint brushes and get ready to attend one of the most memorable PWP Tea and Art Shows. Stay tuned for more details in the July Newsletter.

2011 Tea & Art Show Committee

A Golden Opportunity



"Kansas Gold," giclee, Mary Jo Leisure MDA, TDA

Do not miss this golden opportunity to own artwork by Mary Jo Leisure MDA, TDA. "Kansas Gold" was created for the Society of Decorative Painters and is available exclusively through SDP.

Preorders are being taken at this time. Reserve this luminous giclee** today:

* Size: 11"-by-14"

* Presented on archival paper.

* \$75 per print includes shipping to the U.S. (If you live outside of the U.S., please place your order by email to shandi@decorativepainters.org. Additional shipping fees will apply.)

* Limited edition

* Printed from the original work in oil.

Pre-orders must be placed no later than midnight, March 28, 2011. Mary Jo will be signing "Kansas Gold" at 2011 SDP Conference from 6-8 p.m., Wednesday, May 18 at the SDP Sales Booth. Don't delay! Reserve your giclee of "Kansas Gold" today at www.decorativepainters.org.

** Giclee: A printmaking method used to create images of paintings producing high-quality reproductions second only to the original.



Flights of Fancy: Celebrating 40 Years of Painting

Join us May 14-19, 2012 in Wichita, Kansas as we celebrate the Society of Decorative Painters' Ruby Anniversary! Make plans now to share this exceptional occasion with your SDP family.

Thank you for sharing your passion for painting with us!

Board of Directors
Society of Decorative Painters



Jane Allen Paint-in Nativity Triptych

Saturday, June 25, 2011
9AM—4PM

First Church of God Community Center
Class fee is \$20 (includes pattern packet)

(Students may purchase surface from Jane Allen for an additional \$12.50 — available at the May PWP meeting.)



Name: _____

Address: _____

Phone No. _____ E-Mail: _____

Check enclosed: _____ \$20 class fee

This Paint-In is limited to the first 30 members registering according to the date on the envelope. Please bring this form to the May meeting or send this form and your payment (payable to PWP) before June 15th to:

Dee DeLorenzo
214 E. Main Street
Mechanicsburg, PA 17055

Additional information:

Paints: Bring the colors that you have, Jane will bring a set or two of extra paints to share.

DecoArt Americana Acrylics: Baby Blue, Bleached Sand, Blue, Chiffon, Cool Neutral, Driftwood, Espresso, Flesh Tone, Green Tea, Hauser Medium Green, Khaki Tan, Marigold, Payne's Grey, Raw Sienna, Sapphire, Shading Flesh, Terra Coral, Yellow Ochre. *DecoArt Dazzling* Metallics: Champagne Gold, Emperor's Gold.

Brushes: These are the brushes that I used for the project; bring your similar favorite brushes and brushes for basecoating.

Loew-Cornell La Corneille Golden Taklon #2 and #3 round (Series 7000), #10/0 and #2/0 liner (Series 7350), 1/2" angular shader (Series 7400), 3/4" glaze/wash (Series 7550)

General supplies needed: blue transfer paper, large palette knife, medium-grit sandpaper, old toothbrush, painter's tape, paper for template, paper towels, pencil, soft cloth, stylus, tracing paper, waxed paper palette, water basin, and q-tips. Also please bring a hair dryer.

Special Products that we will be using:

DecoArt Texture Crackle in Yellow Ochre; Staining & Antiquing Medium. I will be bringing these for the class, but if you have them and want to bring them, please do so.

GINGER EDWARDS IS COMING TO PWP!



Ginger Edwards (front) with Arlene Linton — we are lucky to have both these talented ladies coming to PWP.

Save the end of September for a real treat! Ginger Edwards will conduct a seminar September 30 – October 1, 2 here in Mechanicsburg. Ginger is one of our great decorative artists known for her delicate floral and landscape paintings. Her roses are the ultimate in floral painting.

Ginger was doing “trash to treasure” painting before it was trendy. Her rose painted old chairs with sayings are something to be cherished.

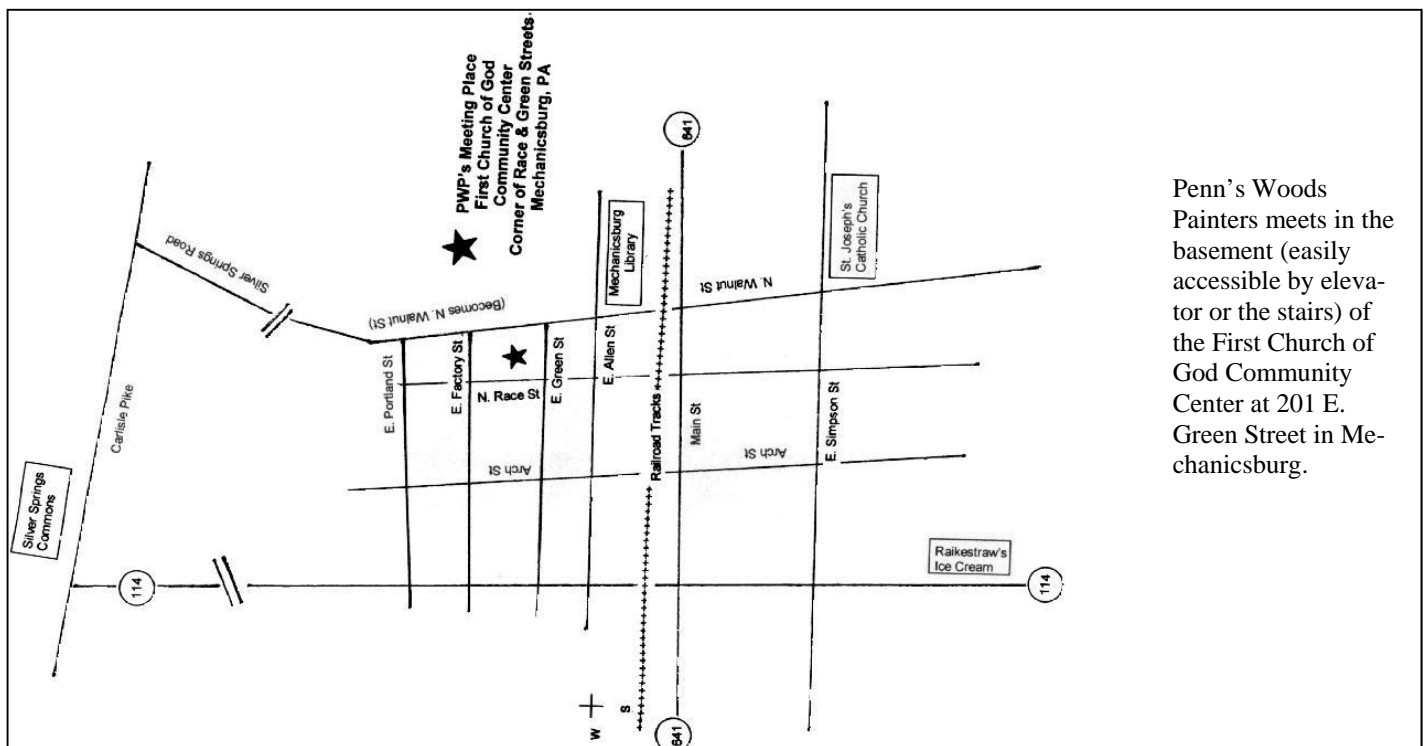
Ginger has written more numerous books and magazine articles over the more than 30 years of painting. Ginger served as president of the Society of Decorative Painters, 1988-89. She received the Distinguished Service Award in 1990; and the Silver Palette, SDP’s highest honor, in 1991.

When asked on a Decorative Artist’s Workbook interview if she considered herself a Southern Belle. She replied that most women would be complimented to be a Steel Magnolia, with strength of character and fortitude, while being a lady. Ginger is most certainly that. Her local volunteer work after Katrina also involved many decorative artists throughout the country

Friday, our opening day, will of course, be a rose workshop on Ginger’s famous roses. You won’t want to miss this opportunity. The project will be a single rose design. Saturday’s project will be a beautiful box “His Eye Is On The Sparrow” A design with blue morning glories intertwined with a small bird on a nest and flowing script lettering. Sunday we will be painting a design of poppies and learn glazing to determine the final color.

Chapter members registration fees will be \$70 per day, or \$200 for all three days. Chapter members have priority registration until May 31. Registration forms will be available at the May 14th meeting.

Non- Members fee will be \$80 per day or \$230 for all three days.



Penn’s Woods Painters meets in the basement (easily accessible by elevator or the stairs) of the First Church of God Community Center at 201 E. Green Street in Mechanicsburg.

GINGER EDWARDS SEMINAR

Friday, Saturday, Sunday

September 30, October 1, 2, 2011

9:00 AM – 5:00 PM

First Church of God Community Center
Mechanicsburg, PA

Class Fees:

PWP Chapter Members: \$70 each day, or \$200 all three days

To claim the chapter member discount, you must be a member of PWP and also a member of SDP

Non-members: \$80 each day, or \$230 all three days



“Rose Workshop”
Friday
One day project
Surface TBD



“His Eye is on the Sparrow”
Morning Glories
Saturday
One day project



“Poppies”
Sunday
One day project
Surface TBD

Name _____ SDP# _____ if applicable

Address _____

City & State _____ Zip _____

Phone# () _____ Email Address _____

Space limited to first 28 people, as determined by the envelope postmark, others will be placed on a wait list. Classroom doors will open at 8:30 am each day. Class will begin at 9:00 am.

Surfaces information and costs will be available later.

Coffee, tea, and breakfast pastry will be available each day.
A light lunch is available each day, donations are accepted towards the cost.
Parking is available in the parking lot across the street from the community center.
Payments are non-refundable.

Please indicate days of attendance and include payment with registration form.
Payment confirms your reservation in the class.

Mail payment (payable to PWP) & registration form to:
Jackie Nowak, 53 Longwood Drive, Mechanicsburg, PA 17050-7973

Amount enclosed \$ _____
Class Fee: ___ Friday ___ Saturday ___ Sunday ___ All three days

For additional information, email PaintinginPA@aol.com

ARLENE LINTON SEMINAR

Friday, Saturday, Sunday

June 17, 18, 19, 2011

9:00 AM – 5:00 PM

First Church of God Community Center

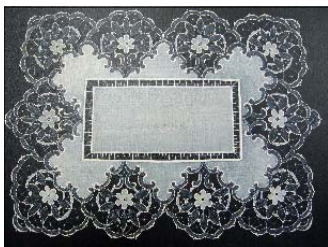
Mechanicsburg, PA

Class Fees:

PWP Chapter Members: \$60 each day, or \$170 all three days

To claim the chapter member discount, you must be a member of PWP and also a member of SDP

Non-members: \$70 each day, or \$200 all three days



“Medici Doily”
Friday
Faux linen & lace
11” X 15”
One day project



“Piscan Lace”
Saturday
Lace frame
10 1/2” X 10 1/2”
One day project



“Antique French Doily”
Sunday
netted background
w/ mini roses
6 inch round
One day project

Name _____ SDP# _____ if applicable

Address _____

City & State _____ Zip _____

Phone# () _____ Email Address _____

Space limited to first 28 people, as determined by the envelope postmark, others will be placed on a wait list. Students must provide their own flat surface that meets the dimensions listed for each project. Classroom doors will open at 8:30 am each day. Class will begin at 9:00 am.

Coffee, tea, and breakfast pastry will be available each day.
A light lunch is available each day, donations are accepted towards the cost.
Parking is available in the parking lot across the street from the community center.
Payments are non-refundable.

Please indicate days of attendance and include payment with registration form.
Payment confirms your reservation in the class.

**Mail payment (payable to PWP) & registration form to:
Jackie Nowak, 53 Longwood Drive, Mechanicsburg, PA 17050-7973**

Amount enclosed \$ _____
Class Fee: _____ Friday _____ Saturday _____ Sunday _____ All three days

For additional information, email PaintinginPA@aol.com



**Memories from the
Positively
Wonderful Purses
Luncheon**