

# Brush Strokes



## *Penn's Woods Painters Newsletter*

*www.pennswoodspainters.com*

*South Central Pennsylvania Chapter of the Society of Decorative Painters*

Vol. 22 No. 5

September/October 2011

### Next General Membership Meeting

Saturday, September 17, 2011 (**DATE CHANGE**)

Place: Camp Hill United Methodist Church

417 S. 22d St, Camp Hill, PA (**VENUE CHANGE**)

Social: 9 a.m. Business Meeting: 9:30 a.m.

**"See You in September . . ."**

Painting Wooden Cards with Hilary Felinski

Please join us on Saturday, September 17 (**DATE CHANGE**), as we express our gratitude to military personnel and their families through the SDP-endorsed "Paint for Freedom" program. We will be painting a design from the **Decorative Painter (DP)**, Spring 2008, on a 5 3/4" by 7 3/4" wooden card that can be laced with ribbon, raffia, waxed string, leather, or the cord of your choice. We will be painting in acrylics, so bring your normal acrylic painting supplies, your pre-ordered base-coated card with the pattern on horizontally (see below for prep instructions), and the paints listed in the **DP** if you have them. If you know a military member that you'd like to give the card to, feel free to keep your card and give it to them. If not, Hilary will collect the cards at the end of the day, and we will get them to a military organization for distribution on Veterans' Day.

Bring a bagged lunch; the chapter will provide iced tea, water, coffee, hot tea, and dessert.

If you need to use an elevator you can enter through the front of the building. If not go around to the back and enter through Door #6 and take the steps downstairs. It will be in the old Fellowship Hall, which will be at the bottom of the stairs.

If you are not staying to paint, please sit in the row of chairs in the back of the room to allow those that are painting to set up their area. Come out and brighten a service members' day with a hand-painted "Paint For Freedom" card.

**Surface:** Wooden card basecoated in DecoArt's

Payne's Grey, Uniform Blue, True Blue, Blueberry, Deep Midnight Blue, or Midnight Blue. **PLEASE BRING YOUR BASE-COAT COLOR WITH YOU.**

**Pattern:** The instructions and pattern for this card designed by Toni McGuire, CDA, are in the **Decorative Painter, Spring 2008**. Please take note that the pattern will go on the card horizontally with the slots on the top. If you don't have this issue, please let Hilary know, and she will get you a copy of the instructions.

**Brushes:** #4 shader, #8 shader, #3 round (good for strokes), #5 round (good for strokes), #0 liner

**Palette:** DecoArt Americana Burnt Umber, Light Buttermilk, Payne's Grey, Santa Red, Soft Black, True Blue, Dazzling Metallics Glorious Gold. We will have several sets of paint available, but bring the paint if you have it.

**Other Supplies:** Ribbon, raffia, waxed string, leather, or cord of your choice



Carol L. Henry, VP, Programs

### LOOKING AHEAD!!

### **PWP's November General Membership Meeting**

Monday, November 21, 2011

Program: Hand-Painted Holiday Pin Exchange & Cookie Sampler

Social: 6:30 p.m. Business Meeting: 7:00 p.m.



Penn's Woods Painters Annual Tea and Art Show

## *Painting with the Oldies, but Goodies*

**Sunday, October 23, 2011**

**2:00 p.m.- 4:30 p.m.**

**Camp Hill United Methodist Church**

417 South 22nd. Street

Camp Hill, Pa 17011

### ***Catagories:***

- *Animals*
- *Birds*
- *Christmas*
- *Floral*
- *Folkart - Primitive*
- *Fruit*
- *Holiday*
- *Landscapes & Seascapes*
- *Miniatures*
- *Original Design*
- *People*
- *Stroke*
- *Trash to Treasures*
- *Wearables*
- *Whimsical*

**Admission: 1 jar peanut butter** (which will be donated to a local food bank)

### **Guest Welcome**

**RSVP by October 9th:**

Darlene Ferrier  
566.5516  
darleneferrier@aol.com

Doris Kohler  
938.8053  
djktak@epix.net

- Each member may submit up to 3 entries.
- Entries will be accepted from 2:00 - 2:30.
- Please cover signature on artwork.
- If needed to display your entry please bring your own stand or easel.



As summer rolls to an end we look to Autumn and all it has to bring. I am thrilled with all the activities and paint-ins and seminars we have planned. Be sure to check out the entire newsletter to ensure you don't miss a thing!

Of major note is the change of location for our September General Membership meeting. As many of you know, the Church of God Community Center is used for many community activities. One of them is an annual sale of children's items held by a group of mothers of multiples. God Bless them all that they have the energy to run a sale! It is traditionally held on the same day as our September meeting. SO...we originally moved the meeting to the 24<sup>th</sup>, then an unexpected event was also scheduled on that day. Florence Byers, a gracious woman, wonderful painter and a member of PWP is having an auction that day, of her home and some of the contents she will not be taking with her when she moves. The board decided that we would move the date of the meeting back to it's regular date if we could meet elsewhere. So, Jane Allen has arranged for us to meet at the Camp Hill United Methodist Church, as noted on the first page of the newsletter. Now all those people who want to attend the sale and help support Florence, not to mention have the opportunity to own a very special treasure from the sale, will be able to attend.

Thanks to all the board members and others who were flexible and able to make this work in a very short time frame. I appreciate all the help.

Regards,  
Susan Wenning

**HEIRLOOMS FROM THE HEART**

**2011 Seminars**

**Heather Reddick**  
**Sept 20—22**

**Heidi England**  
**October 7—9**

**Ronnie Bringle**  
**October 14—16**

**Brenda Stewart**  
**October 21—23**



*We carry a large variety of top quality wood surfaces. Check our website for updates and new products including our new metal art.*



2677 N. Old Trail, Shamokin Dam, PA 17876 • 570.743.4141  
heirloomstudio@pa.net • www.heirloomsfromtheheartstudio.com  
Orders: 866-772-2667

***Penn's Woods Painters Retreat***  
***Philip Bongiorno Conference Center***  
***Carlisle, PA 17013***  
***February 3-5, 2012***

The projects have been selected for the next Penn's Woods Painters Retreat! We will be painting a beautiful plate designed by Judy Diephouse, a terrific Janice Miller shirt design, and really cool bangle bracelets.

The cost for the weekend retreat is as follows:

Private Room:	\$198 (\$66 x 3 payments)
Double Occupancy:	\$183 (\$61 x 3 payments)
Triple Occupancy:	\$168 (\$56 x 3 payments)
Day Rate:	\$153 (\$51 x 3 payments)

These costs include 2 nights' accommodation, Friday dinner, 5 meals on Saturday & Sunday, paint surfaces and paints! Also included at no extra charge is fun, friendship and loads of laughter.

All attendees will be required to register for all three days. The Application for the Retreat is below.

To ease budgeting for the event, you can make 3 payments due not later than September 17<sup>th</sup>, November 21<sup>st</sup> and January 21<sup>st</sup> (The scheduled PWP meeting dates)

The next planning meeting for the retreat committee will be at Dee DeLorenzo's 214 E. Main St, Mechanicsburg on Monday, September 12th at 6:30 p.m. Anyone interested in helping a little or a lot is welcome to attend. Please give me a call at 717-728-9470 or send an e-mail to [ddelores@verizon.net](mailto:ddelores@verizon.net) with any questions.

***Fundamentally Fun & Functional 2012 Painting Retreat***

Name \_\_\_\_\_

Address \_\_\_\_\_ City/State/Zip \_\_\_\_\_

E-Mail \_\_\_\_\_ Phone \_\_\_\_\_

I wish to room with: \_\_\_\_\_

I would like to share a room, however, I don't have a roommate \_\_\_\_\_

Amount Enclosed: \_\_\_\_\_ Check # \_\_\_\_\_ Emergency Contact: \_\_\_\_\_

Make checks payable to: Penn's Woods Painters. **Mail Registration** with payment to: Penn's Woods Painters Retreat  
PO Box 1518 Mechanicsburg, PA 17055.



## PWP MEMBERS FEATURED IN PAINTWORKS MAGAZINE

Amy Mogish has three tin Christmas ornaments based on her experience with her dog and husband when picking out their Christmas tree in the Holiday 2011 issue.



and

Jane Allen has a "Tin Candle Box" in a fall motif in the October 2011 issue plus several tin "Garden Bird" ornaments in the Holiday 2011 Issue.



# Way to go ladies!

## MEMBERSHIP REPORT

As of August 30, 2011, we have 98 members, including the 2 lifetime members. Prior to the last meeting, Linda Lehman joined our chapter. Please add the following information to your directory:

Linda Lehman  
9 Kings Arms  
Mechanicsburg, PA 17050  
717-458-8408

Also, Linda Fromm has a new email address: [lcfromm@hotmail.com](mailto:lcfromm@hotmail.com)  
Reminder, between October 1 and December 1, your 2011 PWP membership dues should be paid (\$20.00). An application (see page 10) must be included with your check payment. Don't forget to check if you want your newsletter electronically or mailed. New this year is an area to check that we have your permission to print your name in the annual directory. Remember, if you choose to receive it electronically, the chapter saves the printing and postage charges. This is also a great time to renew your SDP membership, as well.

Linda Kapp  
VP Membership



# Heart of Ohio Toile (HOOT) 2011 Columbus, Ohio "Painting is a HOOT" August 8-13 2011

The following PWP members attended HOOT this year: Jane Allen, Lois Eckert, Darlene Ferrer, Karen Gleim, Penny Henry, Fran Huffman, Fay Manley, Linda Sutphin, Judy Vetock, and Betty Lou Zimmerman. It was another fantastic convention at HOOT, their 31st year, with the theme "Painting is a HOOT". There were Owls everywhere and what a fun time to be had by all that attended. Number registered exceeded 900 and perhaps 1,000 when you added in all the fine exhibitors. They again had great teachers and great projects and ran the show with exceptional expertise. The art show again had many great paintings and was a site to be enjoyed by those that attended. On Wednesday night they had an after Trade Show party with food, drink, and dancing. The trade show was exceptional again with many great vendors and wonderful choices of all kinds of art objects and designs and wood and more. Again, there were two beautiful hand-painted quilts and a painted tin coffee pot raffled with a portion of the proceeds donated to charity. And there was another painted bra show and silent auction, which netted \$1,200 towards breast cancer research. At the banquet, PWP member, Lois Eckert, for

the third year in a row, won the table centerpiece; way to go Lois. Next year's convention is scheduled for August 13-18, 2012 with a theme "You Too Can Paint". I can't imagine how this convention could get any better; it was GREAT.

By Linda Sutphin



ARTSY SANTA DESIGNED  
BY JANE ALLEN

## Report from MASCC July 30, 2011 Meeting

PWP hosted a Mid-Atlantic States Chapter Council meeting, facilitated by Eddiejo Bunker. 14 folks who are members of 11 different chapters met on July 30. Topics discussed included reviewing the combined calendar that lists all chapter seminars (dates, artists), discussion about both encouraging new members to join and retaining current members, discussion about what dissuades potential members from joining us, meeting location ideas, especially when members are drawn from a wide geographic area. Issues raised included concerns about the DP, conversations to/from SDP, dues change (SDP and locally).

In the afternoon, we had a round table discussion that included things such as a) how do we choose seminar projects? B) Thank you's to recognize the effort that folks put in to make chapters successful, c) how to involve members, d) a reminder that every member is responsible to be involved, e) how to provide information (website, business cards), f) what are our community service programs.

And, of course, we talked about fundraising. All in all, it was a full day, with lots of ideas discussed. We were blessed that Sheila was able to join us for the afternoon session – it was wonderful to see you, Sheila!

Hilary Felinski, MASCC Chairperson

**MINUTES OF THE GENERAL MEMBERSHIP MEETING  
PENN'S WOODS PAINTERS CHAPTER  
JULY 18, 2011**



**Sue Wenning**, President, called our meeting to order at 7:00 pm. Sue welcomed all members. There were 38 present for the meeting.

**May Meeting Minutes** – A motion was made by Dottie Shultz to approve the minutes from the May meeting with corrections regarding Fran Huffman volunteering for Sunshine vs. Hospitality. The motion was seconded by Lois Eckert. The motion carried.

**Treasurer's Report** – **Lois Eckert** reported as of 07/18/2011: Beginning Balance-\$8318.31, Income - \$658.04 Expenses - \$2183.74 with an ending balance of \$7431.82. The report will be filed for audit.

**Presidents Report** – **Sue Wenning** We will be alternating years for the luncheon and the retreat. We will have the retreat one year and the luncheon the next year. We need to be extra cautious about submitting for reimbursements. If you have questions, please see Sue Wenning or Lois Eckert. The funding for the Tea is listed under Administration. The Current proposed budget shows \$300 for the Tea. This was increased to \$500 for 2011 and 2012. A motion was made by Darlene Ferrier and seconded by Mary Lank. Motion approved to modify budget for the Tea to \$500.

**Vice President** – **Programs-Carol Henry** The program for today will be presented by Darlene Ferrier. It will be a miniature painting of geraniums. The budget for membership is based on having 100 members for the year. Next month the meeting will be on September 24. We will be painting a community service project. It will be Freedom Cards to be distributed among military personnel.

The November meeting will **NOT** be an ornament exchange. It will be a **PIN** exchange.

**Vice President** – **Membership** – **Linda Kapp** 96 members and 2 lifetime members.

**Committee Reports**

**Decorative Arts Tea** – **Darlene Ferrier/Jane Allen/Doris Kohler**: Darlene reported they are looking for more volunteers. They would also like donations of cakes or cupcakes to be served for dessert for the Tea.

A Miniature category has been added to the categories by request. The Tea will be held at the United Methodist Church in Camp Hill. Please RSVP to Darlene or Doris. See you Newsletter for their contact information. Bring a jar of peanut butter to the Tea to be donated to the food pantry. Please wear your dancing shoes. The theme is "Painting with the Oldies but Goodies".

**Historian** – **Shelia Rouse**: absent

**Hospitality** – **Pat Sheely**: Thank you to those who brought refreshments for tonight's meeting.

There were a lot of desserts left. Pat will be taking them home to freeze for another meeting if it is okay with those who brought them. The recipe for the meringue cookies was requested.

**Librarian** – **Hattie Ogle**: Several donations made to the library were received tonight. They included a book from Arlene Linton, Rose Bellavia, Jane Wheeler, Jackie Nowak and Hilary Felinski also contributed new items.

**Memory Boxes** – **Dottie Shultz** Thank you for all who painted Memory Boxes. We cannot use the small boxes for 2 of our hospitals. The small boxes are for sale at \$2 .65 each. If you buy the small boxes do not bring them back for Memory Boxes.

**Newsletter** – **Sheila Rouse**: Karen Wolford did a great job on the July newsletter. Shelia is feeling better and prayers are still welcome.

**Paint Ins** – **Dee DeLorenzo**: The next Paint-In will be held August 20. It will be a Santa painted on a gourd and taught by Linda Kapp. There is still time to register. Linda has the gourds; they are \$10 a set.

The June Paint-In has moved to the October time slot due to the flood. Jane Allen will be teaching. Shelia Rouse will do her ornaments next year.

**Retreat-Dee DeLorenzo**: The second retreat-planning meeting has been held. The next one will be July 27 at Dee's home at 6:30. The theme for the Retreat is Fun and Functional. There are three basic categories: 1: Friday will be a jewelry project. : 2: Saturday: Clocks will be painted.

3. Sunday: will be a BYOB (bring your own blouse). This will be our third Retreat. It will be held February 3,4,5, 2012. Payment can be made in three installments on September 24, November 21 and January 21. The cost will be \$165/there or more per room, \$180/two per room and \$195/single room. Most surfaces and paints are included.

We will have Sub Committees: Lois Eckert, Financial: Linda Kapp, Prizes: Linda Deardorff and Mary Lank, Food. PWP will provide the food for Friday night.

Please let the committees know if you have ideas and are interested in volunteering or teaching.

**Publicity** – **Linda Deardorff**: There was no article for the meeting tonight.

**Seminars** – **Jackie Nowak**: The Ginger Edwards Seminar will be held September 30 thru October 2, 2011. Friday is closed unless someone signs up for all three days. We need monitors for the seminar. Monitors help with name tags, registration, sales (if allowed), setup, lunch cleanup and receive a pattern for the day's project.

Sheri Rol, MDA, will be doing a seminar in oils in April 2012. Judy Diephouse is scheduled for September 2012 and we will probably be painting a bench on Friday and a whimsical design on a chair for Saturday and Sunday.

**Treasure Boxes** – **Barb Lehman**: Thank you to all who painted boxes. Our supplies are good at the moment.

**Ways & Means** – **Hilary Felinski**: The next Luncheon will be held in 2013. We need a Chairman and Cochairman. Also need ideas for 2012 Fundraisers, since the Luncheon will now be in 2013.

The General Store stock is in Hilary's basement. There are two baskets for the meeting raffle tonight.

**Old Business**: A motion was made by Darlene Ferrier and seconded by Jackie Nowak to approve the budget for the year with the corrections that were discussed about the increases being made. The motion passed.

**Miscellaneous Announcements**: Sue Wenning spoke to Rex regarding the mold and water damage issues in the basement. If you have any concerns or solutions or want to volunteer to help, please email Sue.

Lois Eckert made a motion to adjourn and it was seconded by Hattie Ogle.

There being no further business, the meeting was adjourned at 7:15 PM.

Respectfully Submitted  
Mary Ann Couch  
Secretary

**LOOKING WAY AHEAD!!**

**PWP's January 2012 General  
Membership Meeting  
Saturday, January 21, 2012  
Program: Fusion Blending with  
Heritage Paints**



A very special guest instructor is confirmed to “kick-off” 2012. He will be introducing David Jansen’s Heritage acrylic paints and teaching a fusion blending technique. The project (pictured) is painted on a bisque pillow vase that is glazed inside, but the painting can be done on any 8½”x8 ½” surface. If you want the vase, I will be taking orders and a check made payable to “Pampered Palette” for \$12 at the September meeting. If you can’t make the September meeting and want to order the vase, you can mail me your check up

until October 31.

We will have the vases, prep instructions, and the pattern at the November 21 meeting so that it can be ready for painting when you come to the January meeting.

Carol L. Henry  
VP, Programs, PWP

## WHAT’S A “BUSINESS ROUND TABLE”

By Carol L. Henry

This is the second in a series of articles to inform our members about different aspects of Penn’s Woods Painters (PWP).

A “Business Round Table” was announced by then-President, Debra Kreiger, at the May 2005 General Membership meeting. The purpose of this was so that all members would be able to advertise their class schedules or sell products at one table. The table was set up in the hall. There would no longer be sales pitches at meetings or during show and tell.

In March 2006, the Board revised the guidelines regarding the “Business Round Table.” As such, to better control the limited space, members who want to participate must contact the President a minimum of one month in advance of the next General Membership Meeting. The President has delegated this responsibility to the VP, Programs. If products are sold, 10% of the sales must be provided to the Chapter in accordance with the Standing Rules. The member must remove all products not sold from the premises after the meeting.



## TIPS & TECHNIQUES

by Carol L. Henry  
Brush Strokes Reporter

**Linda Sutphin** from her class with Robert Warren at HOOT: He uses only baby oil to clean his brushes and it works well - NO turp of any kind.

**Darlene Ferrier:** Handiest tool for decorative painters... **6" Proportional Scale.** This gadget will allow you to proportionally resize a pattern to fit any surface size without having to re-sketch your pattern on a grid sheet. Just measure your original pattern design, measure the size of your surface and make the comparison on the proportional scale. The result will be the percentage of increase or decrease needed. Take your original pattern to a copy center, to increase or decrease by scale percentage for copy and you are ready to trace and paint. Proportional Scales are available at most art/craft stores or on line for about \$6. Great use for one of those 40% off coupons!!

**Joanne Spilman Kilduff:** JoAnn's is now selling Traditions paint in the fine art section (not craft paint section). Competitive prices and SDP membership gets you a further discount.

**Penny Henry** from Royal Langnickel at HOOT: I purchased a neat pack called a "Wipe Away Tool Set." They are actually three usable rubber tips that can wipe away mistakes and will not absorb the paint. I am going to use them in place of cotton swabs. One is a very fine point, one looks like an angle, and the other resembles a tipped round. In my Brenda Stewart class we used diluted Stucco Texture paint in a squeeze bottle with a fine point to make raised leaves and then painted over them, which was very cool.

**Judy Vetock** from her class with Ginger Edwards at HOOT: Ginger uses cosmetic sponge wedges to paint edges much like the petite fours did. She also uses them to tap in corrections on backgrounds that have been rolled with a sponge roller so the texture is the same. Loew-Cornell scumbler brushes are great for stippling and much cheaper than the blue-band brushes. They also double for drybrushes and make great Santa beards.

## SEPTEMBER MEETING REMINDERS



### Bring to the September Meeting

- \_\_\_\_\_ Usual Painting supplies
- \_\_\_\_\_ Paints listed on page 1, including basecoat color
- \_\_\_\_\_ Pre-ordered surface, basecoated
- \_\_\_\_\_ Bagged lunch
- \_\_\_\_\_ Check out and Return Library books
- \_\_\_\_\_ New or renewal 2012 membership forms & dues
- \_\_\_\_\_ Items for Business Roundtable
- \_\_\_\_\_ Show & Tell Item
- \_\_\_\_\_ Guest(s)
- \_\_\_\_\_ Checkbook/Money for Meeting Raffle
- \_\_\_\_\_ Check out and return Memory Boxes
- \_\_\_\_\_ Check out and return Treasure boxes
- \_\_\_\_\_ Checkbook/Money for General Store purchases

### Sign Up/Reminders:

- \_\_\_\_\_ Memory/Treasure Boxes to paint
- \_\_\_\_\_ Jane Allen Paint-In
- \_\_\_\_\_ 2012 Retreat
- \_\_\_\_\_ Ginger Edwards Seminar Sept 30—Oct 2
- \_\_\_\_\_ Sign up for a committee (listed on PWP membership form on page 10)
- \_\_\_\_\_ Remember to clean your areas
- \_\_\_\_\_ Remember to use appropriate forms when registering, paying money or submitting expenses.

## Memory Boxes



Can't believe that summer is quickly passing us by and fall is almost here. Where did the summer go? If you didn't get those Memory Boxes painted during the heat wave think about working on them now before the Christmas rush starts. The need for our boxes knows no season. We recently delivered 2 boxes to the Carlisle regional Medical Center.

Thanks to everyone who continues to paint the Memory Boxes, your time and talent are greatly appreciated.

Happy Painting,  
Dottie Shultz



### ***Penn's Woods Painters Membership Application***

Becoming a member in our chapter is very easy.  
Just send your check for \$20 made payable to  
Penn's Woods Painters along with the  
application below to:

*Penn's Woods Painters,  
PO Box 1518  
Mechanicsburg, PA 17055*




---

**Name**

---

**Address**

---

**City, State, Zip**

---

**Home Phone#** **Cell Phone#**

---

**E-mail address**

---

**Birthday Month/Day**

---

**SDP Membership #**

*Please note that SDP membership is a requisite for chapter membership. You may download a SDP membership application at [decorativepainters.org](http://decorativepainters.org).*

**Do you wish to receive your chapter newsletter by:**

U.S. mail      or      electronically

**Please circle one**

**Please check** giving permission to print name, address, phone number(s) and email address in the annual directory.

*If not checked, we will just print your name in the directory*

What committee would you be interested in serving on in 2012?

- |              |              |                |
|--------------|--------------|----------------|
| Art & Tea    | Paint-Ins    | Hospitality    |
| Historian    | Publicity    | 2013 Luncheon  |
| Library      | Seminars     | Treasure Boxes |
| Memory Boxes | Ways & Means | Advertisement  |
| Newsletter   | Webmaster    | Room Setup     |

**Please circle one or more**

Fay Manley	21-Sep
Linda Fromm	22-Sep
Nancy Mallein	27-Sep
Sharon Kuntzman	28-Sep
Julia Leonard	2-Oct
Marla J. Winston	9-Oct
Chris Bevins	14-Oct
Linda Lehman	15-Oct
Mary Lank	17-Oct
Marie Forte	21-Oct
Martha F. Knox	21-Oct
Sharon Wilkes	23-Oct
Vivian Castelli	25-Oct
Karen Wolford	26-Oct
Mary Ann Couch	10-Nov
Joyce Fritz	11-Nov
Rebecca Sowers	11-Nov
Susan DePalma	13-Nov
Tracy Ludwig	15-Nov

### **Sky River Bakery Chocolate Crinkles**

- 1/2 cup Vegetable Oil
- 4 - 1-oz. squares unsweetened Chocolate, melted
- 2 cups Sugar
- 2 tsp. Vanilla.
- 2 cups Flour
- 2 tsp. Baking Powder
- 1 tsp. Salt
- 2 tsp. finely ground Espresso Coffee Beans (or any ground coffee)
- 4 eggs
- 1 cup Powdered Sugar

Preheat oven to 350

Mix oil, chocolate and sugar.

In a separate bowl, sift together flour, baking powder, salt and espresso.

When chocolate mix is slightly cooled, beat in eggs one at a time. Mix in vanilla.

Slowly add dry ingredients, mixing until dough forms.

Chill 1 hour.

Roll dough into 1-inch balls and roll in powdered sugar. Place 2 inches apart on greased baking sheets.

Bake 10 – 12 minutes, until edges are firm and the centers remain moist.

Yields about 48 cookies.

# 2011 PWP CALENDAR



September 17	Saturday	General Membership Meeting - Hilary Felinski Paint for Freedom Cards
Sept 30, Oct 1 & 2	Fri-Sun	Seminar — Ginger Edwards
October 5-9	Wed-Sun	Net (New England Traditions Convention)
October 15	Saturday	Paint-In—Jane Allen Nativity Triptych (Rescheduled)
*October 17	Monday	Board Meeting
October 23	Sunday	Decorative Arts Tea and Art Show
November 21	Monday	General Membership Meeting – Hand painted pin Exchange & Cookie sharing festivities!
*December 19	Monday	Board Meeting
January 21, 2012	Saturday	General Membership Meeting
Feb 3-5, 2012	Fri-Sun	Painting Retreat

*\*Board meetings at Sue Wenning's residence at 7:00 pm, 1012 South Market Street, Mechanicsburg*



## Florence Byers Public sale of house

We who have seen how beautifully Florence paints, know we would each love to own a piece that she has done!

Florence Byers, one of our charter members, and her husband, are relocating to Maryland to be closer to their daughter. They are having a public sale of their house and property, on **Saturday, September 24, 2011, starting at 9:00 am.**

Personal property including antiques, painted and unpainted items will be available for purchase.

Please support Florence as she and her family adjust to this new phase in their lives. Florence's telephone number is 717 432 4824.

The address is 28 Barrens Church Rd, Dillsburg, PA 17019. Please do not email Florence; their computer is not working so she/they cannot access email. Good Luck Florence!

## PENN'S WOODS PAINTERS TREASURER'S REPORT July 18, 2011 to August, 15, 2011

<b>BEGINNING BALANCE</b>	<b>\$7,431.82</b>
<b>INCOME</b>	
Donation-Income	\$100.00
Seminars-Income	<u>\$3,615.00</u>
<b>Total Income</b>	<b>\$3,715.00</b>
<b>EXPENSES</b>	
Operations-Expenses	\$285.00
Programs-Expenses	\$20.00
Taxes (Sales)	<u>\$90.26</u>
<b>Total Expenses</b>	<b>\$395.26</b>
<b>ENDING BALANCE</b>	<b>\$10,751.56</b>

# PWP Officers & Committee Chairs

## Officers:

President	Susan Wenning	421-8250	<a href="mailto:susanwenning@comcast.net">susanwenning@comcast.net</a>
Vice President Programs	Carol Henry	249-7206	<a href="mailto:CHenry67@aol.com">CHenry67@aol.com</a>
Vice President Membership	Linda Kapp	580-8547	<a href="mailto:kapps33@comcast.net">kapps33@comcast.net</a>
Secretary	Mary Ann Couch	766-0918	<a href="mailto:coumac@aol.com">coumac@aol.com</a>
Treasurer	Lois Eckert	766-8017	<a href="mailto:eck1035@aol.com">eck1035@aol.com</a>

## Committee Chairmen:

Decorative Arts Tea	Darlene Ferrier	599-5516	<a href="mailto:edferrier@yahoo.com">edferrier@yahoo.com</a>
Historian	Sheila Rouse	697-7025	<a href="mailto:toleheart@pipeline.com">toleheart@pipeline.com</a>
Hospitality	Pat Sheely	766-3151	<a href="mailto:gsp1957@verizon.net">gsp1957@verizon.net</a>
Library	Hattie Ogle	258-3438	<a href="mailto:ogle@pa.net">ogle@pa.net</a>
Memory Boxes	Dottie Shultz	766-0457	<a href="mailto:dshultz627@verizon.net">dshultz627@verizon.net</a>
Newsletter	Sheila Rouse	697-7025	<a href="mailto:toleheart@pipeline.com">toleheart@pipeline.com</a>
Paint-Ins	Dee DeLorenzo	728-9470	<a href="mailto:ddeles@verizon.net">ddeles@verizon.net</a>
Publicity	Linda Deardorff	737-2997	<a href="mailto:l.deardorff@verizon.net">l.deardorff@verizon.net</a>
Seminars	Jackie Nowak	766-6079	<a href="mailto:jlnowak@aol.com">jlnowak@aol.com</a>
Treasure Boxes	Barb Lehman	795-9845	<a href="mailto:RBLehman2@verizon.net">RBLehman2@verizon.net</a>
Ways and Means	Hilary Felinski	730-9220	<a href="mailto:hilaryfelinski@comcast.net">hilaryfelinski@comcast.net</a>
Past President	Jackie Nowak	766-6079	<a href="mailto:jlnowak@aol.com">jlnowak@aol.com</a>
Webmaster	Sheila Rouse	697-7025	<a href="mailto:toleheart@pipeline.com">toleheart@pipeline.com</a>
2012 Retreat Chair	Dee DeLorenzo	728-9470	<a href="mailto:ddeles@verizon.net">ddeles@verizon.net</a>

## Brush Strokes Newsletter Committee

**Sheila Rouse**  
Editor & Layout

**Mary Jane Wheeler**  
Distribution

**Karen Wolford**  
Co-editor

**Jackie Nowak**  
Proof Editor

**Carol Henry**  
News Reporter



**Barbara Lehman**  
Advertising

### ADVERTISING in Brush Strokes (Published Bi-Monthly)

Color Business Card \$ 7/Issue \$ 30/6 Issues  
 Black/White Business Card \$ 5/Issue \$ 25/6 Issues  
 Color Quarter Page \$10/Issue \$ 45/6 Issues  
 Black/White Quarter Page \$ 7/Issue \$ 35/6 Issues  
 Color Half Page \$14/Issue \$ 70/6 Issues  
 Black/White Half Page \$10/Issue \$ 55/6 Issues  
 Color Full Page \$25/Issue \$120/6 Issues  
 Black/White Full Page \$20/Issue \$100/6 Issues

Please send camera ready ad along with check made payable to Penn's Woods Painters to Barbara Lehman, 805 Shuler Street, Mechanicsburg, PA, 17055. Brush Strokes, the Newsletter for Penn's Woods Painters is published six times a year with a circulation of approximately 125 copies. In addition, Brush Strokes is posted on the chapter's web site. PWP's advertising rates are very reasonable and offer a targeted audience for those wishing to advertise their business, shop, classes, woods, painting supplies, or other services. If you would or someone you know benefit from advertising in Brush Strokes, please contact Barb Lehman, Business Manager, at 717-795-9845 or [rblehman2@verizon.net](mailto:rblehman2@verizon.net)



Dear fellow PWP members,

The scheduled cleaning of the basement room is on! Saturday, September 10th at 8:00 AM we will be wiping all of our

stored items, removing the old rusty cabinet and cleaning all the tables and chairs, as well as the cabinets and floors and walls in the kitchen. We will be unable to shampoo the carpet that day. Rex has rented the room for an afternoon party at 12, so we can not leave the carpet wet. Dry vacuuming should be fine. I will provide; bleach solution, rags, Lysol wipes, buckets, disposable gloves, and hopefully a new cabinet for our kitchen items.

I could use a mop for the "kitchen", and possibly some large plastic tubs if anyone has any. Thanks to all who have volunteered to help!

See you then,  
Sue Wenning



A special thank-you to Karen Wolford for pitching in to create the newsletter while Sheila Rouse has been "battling the beast" — great job, Karen!

## Ways and Means Updates for September 2011

We (PWP) need ideas for fundraising activities for 2012. Please send me your ideas, so we can begin to prepare for 2012. I know...it's only August, and you're already looking at 2012 issues? Yup – that's part of what we do – look ahead and try to figure things out so we don't run into problems or issues.

At our August board meeting, we floated some fundraising ideas: Raffle hand-painted items; Product fundraiser, such as Tastefully Simple, Pampered Chef, Avon, Triangle Car Wash; combining painted items with practical items, such as a quilt, and/or crocheted or knitted items.

So...tell me...What are YOUR ideas for 2012 fundraising? Spring, Fall? Should we reserve a space for Jubilee Day? Would you help man the booth? Where else might we have a chance to raise some money – and get our name out to Jane Q Public?

Let me know what you're thinking about our fundraising for 2012! Email me– [HilaryFelinski@comcast.net](mailto:HilaryFelinski@comcast.net). Remember, our fundraising successes

provide a good portion of the chapter budget.

Now, I know you all think I'm nuts in looking forward so far, but, we also need a chair person, or two, to volunteer for the 2013 Luncheon. If you are interested, please let me know and I will pull together some time to meet with the 2011 committee members. I think it would be good for the 2013 chair(s) to pick the brains of our inaugural committee members – and they will be honest with you, I am sure.

With the support of a huge portion of our chapter membership, we had a fantastic 2011 fundraiser – think how much better we can do with more time to plan and taking some lessons from what we learned? Let me know that you are interested, and we'll start from there!

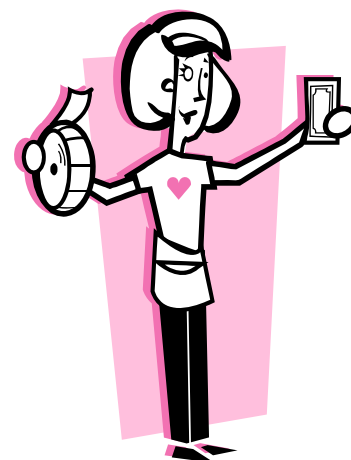
I am looking forward to seeing your ideas...and to learn who wants to be involved!

On a separate note, please let me know if there are any particular items you are interested in purchasing

at our September meeting, from our general store.

You can call me or email me (see above). This way I can bring items that folks are interested in with me, to the September meeting. We have some tshirts (L and XL only), collapsible water basins, button pins (12 new designs), tote bags (pink), double time brush sets, and a number of other items. If you are interested in seeing a full list, let me know and I will send it to you.

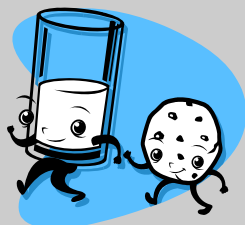
Hilary Felinski  
Ways & Means Chair



### Peanut Butter Chocolate Chip Oatmeal Cookies from the Martha Stewart Cookie Cookbook.

As a variation you can substitute Almond butter for the peanut butter, and salted almonds for the peanuts. This is the variation I brought to the seminar. I do lightly chop the almonds.

3 cups old-fashioned rolled oats  
1/3 cup whole wheat flour  
1 tsp. baking soda  
1 tsp. baking powder  
1/2 tsp. coarse salt  
1 cup packed light brown sugar  
1 cup granulated sugar  
1 cup (2 sticks) unsalted butter, softened  
1/2 cup peanut butter  
2 large eggs  
1 tsp. vanilla extract  
2 cups whole salted peanuts  
2 cups (12 oz.) semisweet chocolate chips



Preheat the oven to 375. Stir together oats, flour, baking soda, baking powder, and salt in a bowl.

Put sugars, butter and peanut butter in the bowl of the electric mixer. Mix on medium speed until pale and fluffy, about 5 minutes. Mix in eggs and vanilla.

Reduce the speed to low. Add oat mixture, and mix until just combined. Mix in peanuts and chocolate chips.

Using a 1 1/2" scoop, drop balls 2" apart onto baking sheets lined with parchment paper.

(Note I prefer smaller cookies and use a 1 1/4" scoop that is about 2 tsp.)

Bake cookies until golden brown and just set about 13 to 15 minutes (using the smaller scoop 10 minutes). Let cool in the pan on wire racks 5 minutes. Transfer cookies to wire racks to cool completely. Cookies can be stored in airtight containers at room temperature up to 2 days. (Note: I keep them out a lot longer. They also freeze well)

Yield about 6 dozen cookies



## **Jane Allen Paint-in Nativity Triptych**

Saturday, October 15, 2011  
9AM—4PM

First Church of God Community Center  
**Class fee is \$20 (includes pattern packet)**

(Students may purchase surface from Jane Allen for an additional \$12.50.)

Name: \_\_\_\_\_

Address: \_\_\_\_\_

Phone No. \_\_\_\_\_ E-Mail: \_\_\_\_\_

Check enclosed: \_\_\_\_\_ \$20 class fee

This Paint-In is limited to the first 30 members registering according to the date on the envelope. Please bring this form to the May meeting or send this form and your payment (payable to PWP) before June 15th to:

Dee DeLorenzo  
214 E. Main Street  
Mechanicsburg, PA 17055

### Additional information:

Paints: Bring the colors that you have, Jane will bring a set or two of extra paints to share.

*DecoArt Americana* Acrylics: Baby Blue, Bleached Sand, Blue, Chiffon, Cool Neutral, Driftwood, Espresso, Flesh Tone, Green Tea, Hauser Medium Green, Khaki Tan, Marigold, Payne's Grey, Raw Sienna, Sapphire, Shading Flesh, Terra Coral, Yellow Ochre. *DecoArt Dazzling* Metallics: Champagne Gold, Emperor's Gold.

Brushes: These are the brushes that I used for the project; bring your similar favorite brushes and brushes for basecoating.

*Loew-Cornell La Corneille* Golden Taklon #2 and #3 round (Series 7000), #10/0 and #2/0 liner (Series 7350), 1/2" angular shader (Series 7400), 3/4" glaze/wash (Series 7550)

General supplies needed: blue transfer paper, large palette knife, medium-grit sandpaper, old toothbrush, painter's tape, paper for template, paper towels, pencil, soft cloth, stylus, tracing paper, waxed paper palette, water basin, and q-tips. Also please bring a hair dryer.

Special Products that we will be using:

*DecoArt* Texture Crackle in Yellow Ochre; Staining & Antiquing Medium. I will be bringing these for the class, but if you have them and want to bring them, please do so.

**GINGER EDWARDS SEMINAR**

**Friday, Saturday, Sunday**

**September 30, October 1, 2, 2011**

9:00 AM – 5:00 PM

First Church of God Community Center  
Mechanicsburg, PA

**Class Fees:**

PWP Chapter Members: \$70 each day, or \$200 all three days

To claim the chapter member discount, you must be a member of PWP and also a member of SDP

Non-members: \$80 each day, or \$230 all three days



**“Rose Workshop”**

Friday

One day project

Surface \$35



**“His Eye is on the Sparrow”**

**Morning Glories**

Saturday

One day project

Surface \$32



**“Poppies”**

Sunday

One day project

Surface \$16

Name \_\_\_\_\_ SDP# \_\_\_\_\_ if applicable

Address \_\_\_\_\_

City & State \_\_\_\_\_ Zip \_\_\_\_\_

Phone# ( ) \_\_\_\_\_ Email Address \_\_\_\_\_

Space limited to first 28 people, as determined by the envelope postmark, others will be placed on a wait list. Classroom doors will open at 8:30 am each day. Class will begin at 9:00 am.

Coffee, tea, and breakfast pastry will be available each day.

A light lunch is available each day, donations are accepted towards the cost.

Parking is available in the parking lot across the street from the community center.

Payments are non-refundable.

Please indicate days of attendance and include payment with registration form.

Payment confirms your reservation in the class.

**Mail payment (payable to PWP) & registration form to:**

**Jackie Nowak, 53 Longwood Drive, Mechanicsburg, PA 17050-7973**

Amount enclosed \$ \_\_\_\_\_

Class Fee:     \_\_\_ Friday   \_\_\_ Saturday   \_\_\_ Sunday   \_\_\_ All three days

Surface Fee:   \_\_\_ Friday   \_\_\_ Saturday   \_\_\_ Sunday   \_\_\_ All three days

For additional information, email [PaintinginPA@aol.com](mailto:PaintinginPA@aol.com)

